

RNAV (GPS) RWY 13

GRENADA MUNI (GNF)

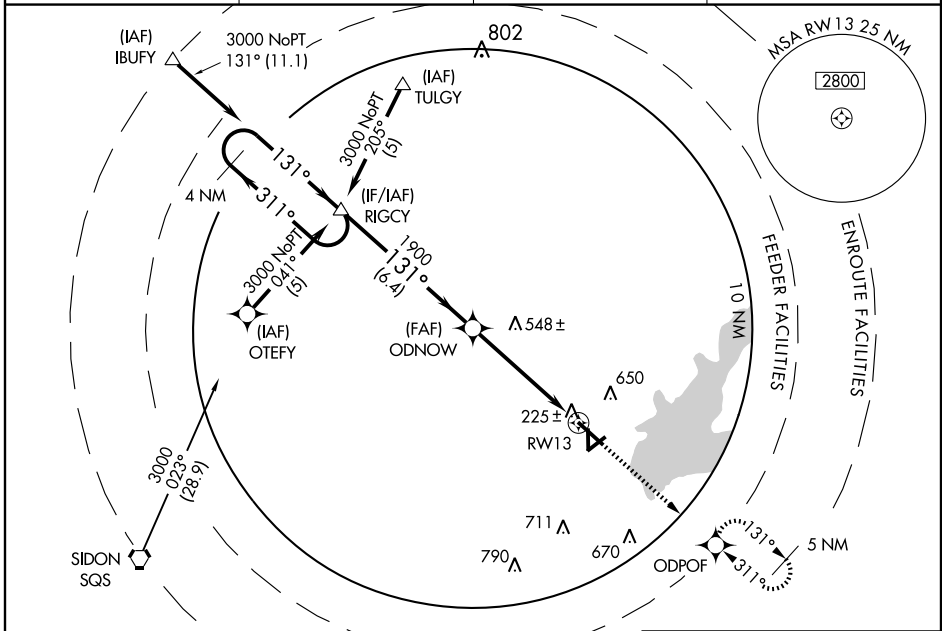
WAAS CH 97328 W13A	APP CRS 131°	Rwy Idg 7000
		TDZE 208
		Apt Elev 208

NA DME/DME RNP-0.3 NA. For inoperative MALSR increase LPV visibility to 3/4 all Cats. If local altimeter setting not received, use Greenwood altimeter setting and increase all DAs 64 feet/MDAs 80 feet. BARO-VNAV and VDP NA when using Greenwood altimeter setting.



MISSED APPROACH:
Climb to 2100 direct ODPOF and hold.

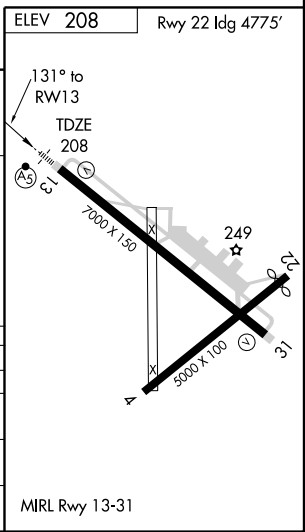
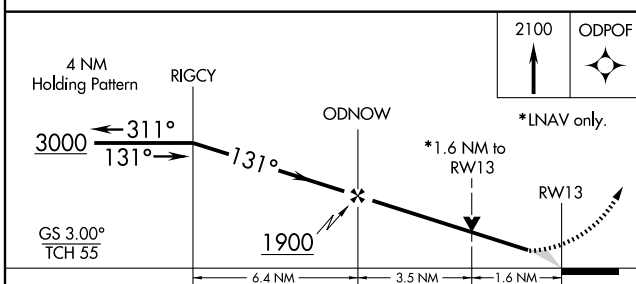
AWOS-3 118.025	MEMPHIS CENTER 128.5 381.4	GCO 121.72	UNICOM 122.8 (CTAF)
--------------------------	--------------------------------------	----------------------	-------------------------------



SC-4, 22 OCT 2009 to 19 NOV 2009

SC-4, 22 OCT 2009 to 19 NOV 2009

Procedure NA for arrivals at SQS VORTAC via V9 southbound.



CATEGORY	A	B	C	D
LPV DA		458-1/2	250 (300-1/2)	
LNAV/VNAV DA		769-1 1/2	561 (600-1 1/2)	
LNAV MDA	780-1/2	572 (600-1/2)	780-1 572 (600-1)	780-1 1/4 572 (600-1 1/4)
CIRCLING	1000-2	792 (800-2)	1000-2 1/4 792 (800-2 1/4)	1000-2 1/2 792 (800-2 1/2)