

RNAV (GPS) RWY 5

ENTERPRISE MUNI (EDN)

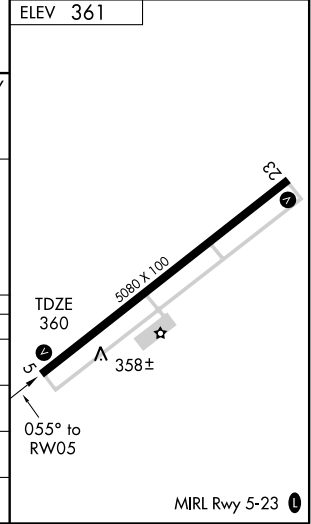
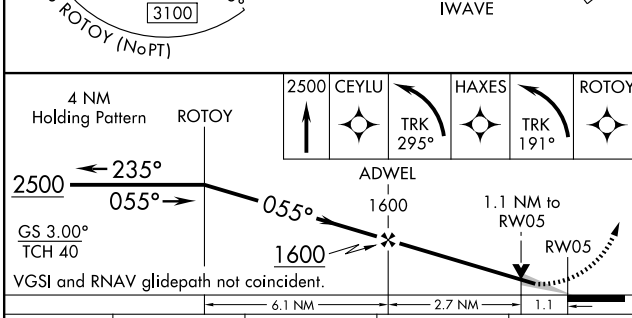
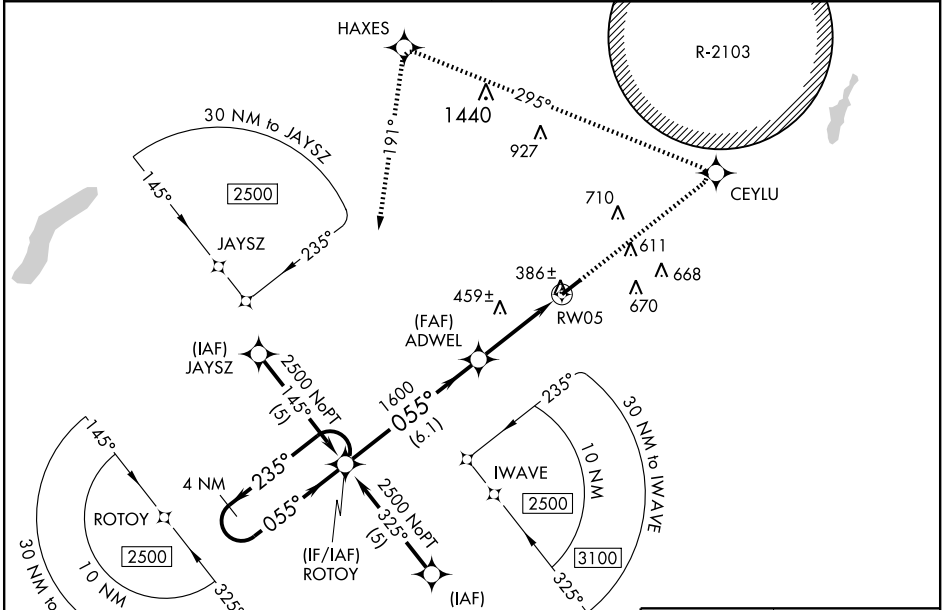
WAAS CH 72614 W05A	APP CRS 055°	Rwy Idg 5080 TDZE 360 Apt Elev 361
--	------------------------	---

▼
▲ NA

Baro-VNAV NA when using Cairns AAF (Fort Rucker) altimeter setting. For uncompensated Baro-VNAV systems, LNAV/VNAV NA below -15°C (5°F) or above 54°C (130°F). DME/DME RNP-0.3 NA. Obtain local altimeter setting on CTAF, when not received, use Cairns AAF (Fort Rucker) altimeter setting and increase LPV DA to 642 feet, LNAV/VNAV DA to 688 feet, and all MDA 40 feet, increase LNAV/VNAV all Cats visibility ¼ mile.

MISSED APPROACH: Climb to 2500 direct CEYLU and left turn via track 295° to HAXES and left turn via track 191° to ROTOY and hold.

CAIRNS APP CON ★ 133.45 239.4	UNICOM 122.8(CTAF) 0
---	--------------------------------



CATEGORY	A	B	C	D
LPV DA	610-1	250 (300-1)		NA
LNAV/VNAV DA	656-1	296 (300-1)		NA
LNAV MDA	720-1	360 (400-1)		NA
CIRCLING	820-1	459 (500-1)	820-1½ 459 (500-1½)	NA

SE-4, 22 OCT 2009 to 19 NOV 2009

SE-4, 22 OCT 2009 to 19 NOV 2009