

ELBERTON, GEORGIA

AL-6567 (FAA)

# RNAV (GPS) RWY 28

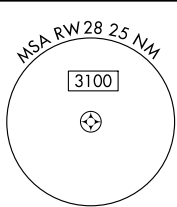
ELBERTON/ ELBERT COUNTY-PATZ FIELD (27A)

APP CRS <b>284°</b>	Rwy Idg <b>4000</b>
	TDZE <b>603</b>
	Apt Elev <b>603</b>

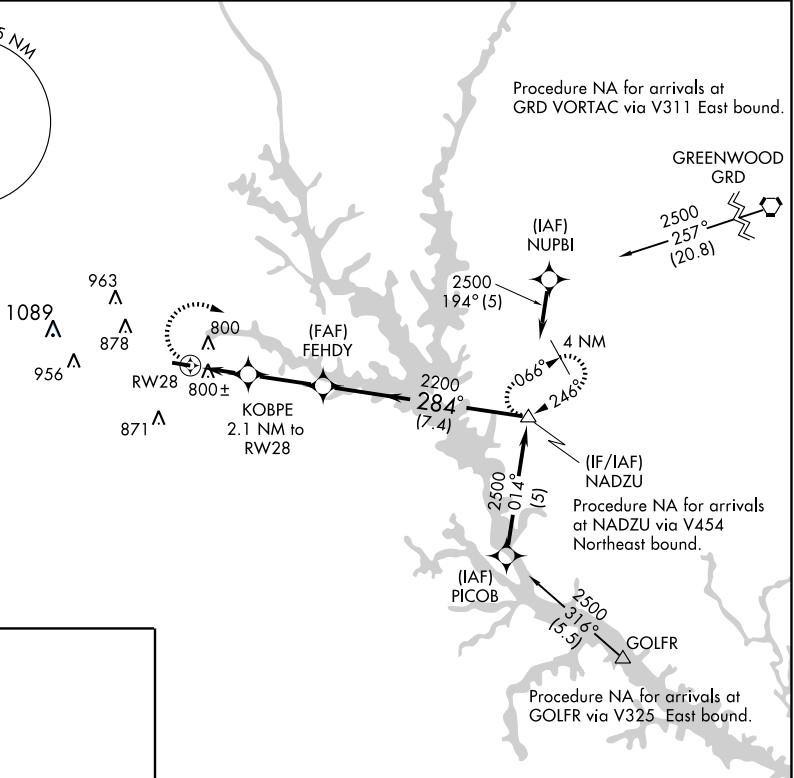
When local altimeter not received, use Anderson altimeter setting and increase all MDA 100 feet and LNAV and Circling Cat. C visibility ¼ mile. VDP NA when using Anderson altimeter setting.  
DME/DME RNP-0.3 NA. Visibility reduction by helicopters NA.

MISSED APPROACH: Climbing right turn to 2500 direct NADZU and hold.

AWOS-3 <b>118.15</b>	ATLANTA APP CON * <b>127.5 316.05</b>	UNICOM <b>122.8 (CTAF) 0</b>
-------------------------	--	---------------------------------



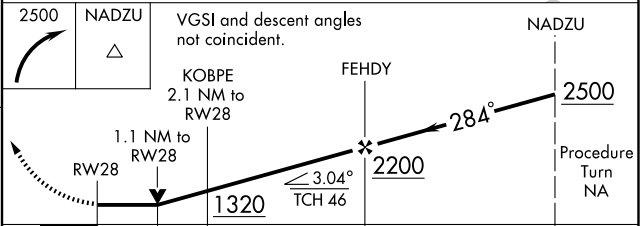
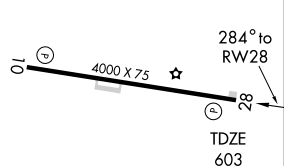
Procedure NA for arrivals at GRD VORTAC via V311 East bound.



SE-4, 22 OCT 2009 to 19 NOV 2009

SE-4, 22 OCT 2009 to 19 NOV 2009

ELEV 603



CATEGORY	A	B	C	D
LNAV MDA	1100-1	497 (500-1)	1100-1¼ 497 (500-1¼)	NA
CIRCLING	1200-1	597 (600-1)	1220-1¾ 617 (700-1¾)	NA

ELBERTON, GEORGIA  
Orig 08325

34° 06'N - 82° 49'W

ELBERTON/ ELBERT COUNTY-PATZ FIELD (27A)

# RNAV (GPS) RWY 28