

# NDB or GPS RWY 33

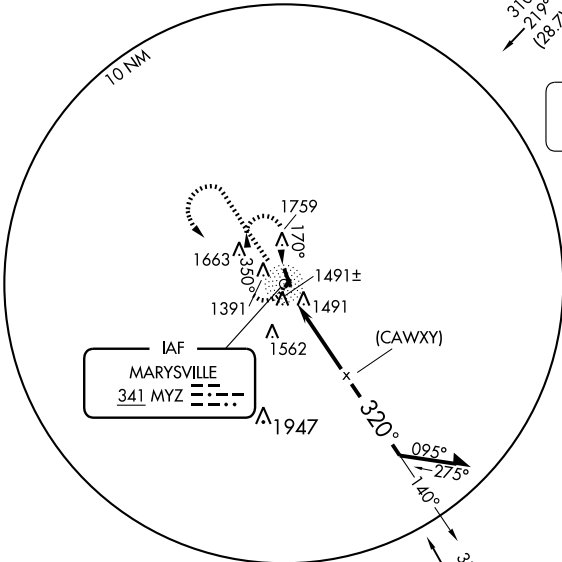
MARYSVILLE MUNI (MYZ)

NDB MYZ <b>341</b>	APP CRS <b>320°</b>	Rwy Idg <b>4200</b>
		TDZE <b>1283</b>
		Apt Elev <b>1283</b>

**▽** Use Beatrice, NE altimeter setting; when not received, use Concordia/Blosser Muni altimeter setting; when neither altimeter setting received, procedure not authorized.

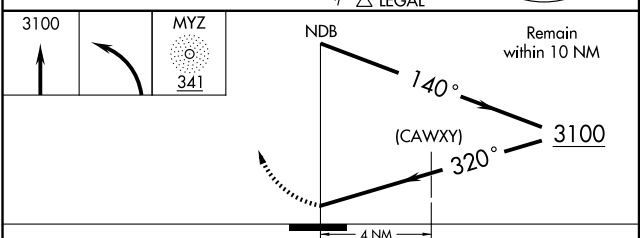
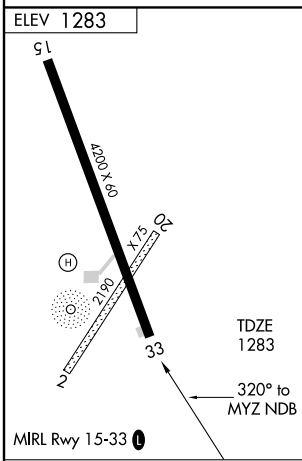
**▲ NA** MISSED APPROACH: Climb to 3100 then left turn direct MYZ NDB and hold.

KANSAS CITY CENTER <b>123.8 343.7</b>	UNICOM <b>122.8 (CTAF) 0</b>
--	---------------------------------



NC-2, 22 OCT 2009 to 19 NOV 2009

NC-2, 22 OCT 2009 to 19 NOV 2009



CATEGORY	A	B	C	D
S-33	2060-1 777 (800-1)	2060-1¼ 777 (800-1¼)	2060-2¼ 777 (800-2¼)	NA
CIRCLING	2180-1¼	897 (900-1¼)	2180-2¾ 897 (900-2¾)	NA
CONCORDIA/BLOSSER ALTIMETER SETTING MINIMUMS				
S-33	2140-1 857 (900-1)	2140-1¼ 857 (900-1¼)	2140-2½ 857 (900-2½)	NA
CIRCLING	2300-1¼ 1017 (1100-1¼)	2300-1½ 1017 (1100-1½)	2300-3 1017 (1100-3)	NA