

ORANGE, VIRGINIA

AL-6565 (FAA)

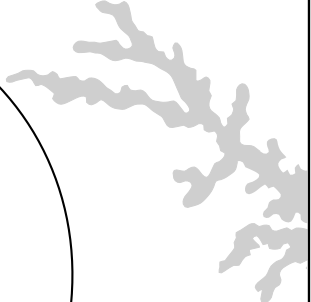
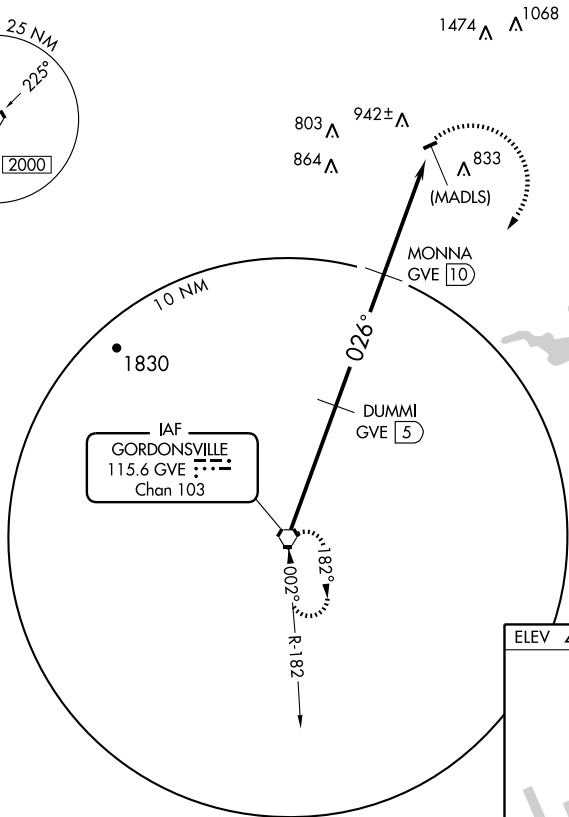
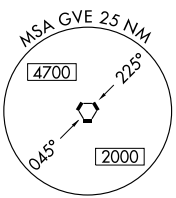
VORTAC GVE 115.6 Chan 103	APP CRS 026°	Rwy Idg TDZE Apt Elev N/A N/A 465
---	------------------------	---

VOR/DME or GPS-A

ORANGE COUNTY (OMH)

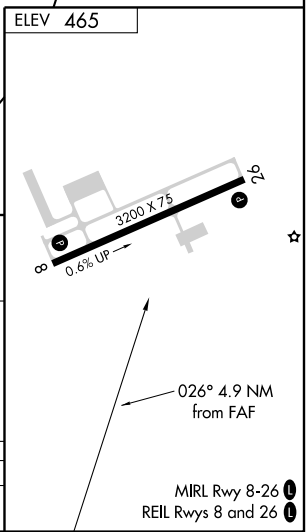
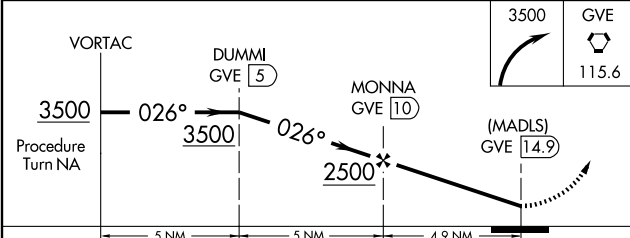
NA NA	MISSED APPROACH: Climbing right turn to 3500 direct GVE VORTAC and hold.
----------	--

AWOS-3 118.075	POTOMAC APP CON 132.85 257.75	UNICOM 122.8 (CTAF)
--------------------------	---	-------------------------------



NE-3, 22 OCT 2009 to 19 NOV 2009

NE-3, 22 OCT 2009 to 19 NOV 2009



CATEGORY	A	B	C	D
CIRCLING	2000-3 1546 (1600-3)		NA	

ORANGE, VIRGINIA
Amdt 2A 08045

38°15'N - 78°03'W

ORANGE COUNTY (OMH)

VOR/DME or GPS-A

MIRL Rwy 8-26
REIL Rwys 8 and 26