

RUSHFORD, MINNESOTA

AL-6563 (FAA)

RNAV (GPS) RWY 34

RUSHFORD MUNI (55Y)

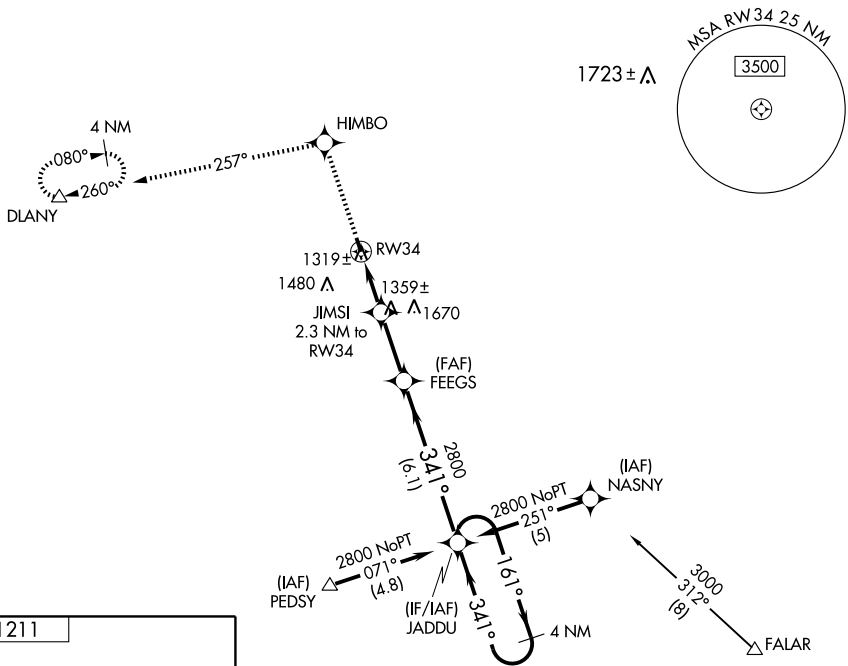
APP CRS 341°	Rwy Idg 3200
	TDZE 1209
	Apt Elev 1211

NA
 DME/DME RNP-0.3 NA
 Visibility reduction by helicopters NA.
 Use Preston altimeter setting, when not received use
 Winona altimeter setting and increase all MDA 80 feet.

MISSED APPROACH: Climb to 3000 direct HIMBO and via
 257° track to DLANY and hold.

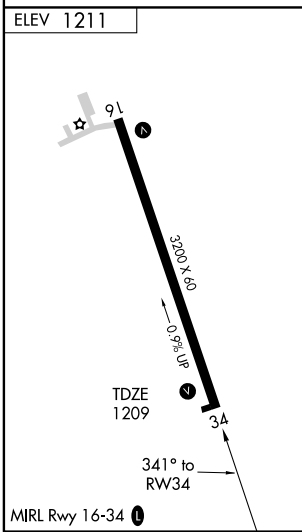
ROCHESTER APP CON ★
119.8 251.125

CTAF
122.9

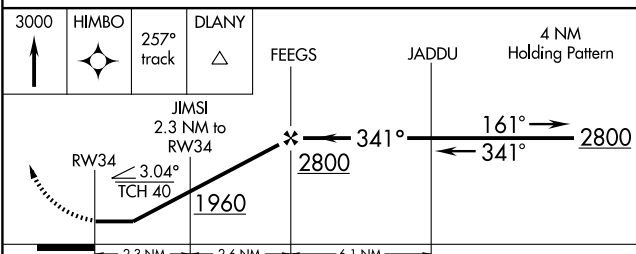


NC-1, 22 OCT 2009 to 19 NOV 2009

NC-1, 22 OCT 2009 to 19 NOV 2009



Procedure NA for arrivals at FALAR via V24 eastbound and V246 southbound.



CATEGORY	A	B	C	D
LNAV MDA	1620-1	411 (500-1)	1620-1¼ 411 (500-1¼)	NA
CIRCLING	1720-1	509 (600-1)	1720-1½ 509 (600-1½)	NA

RUSHFORD, MINNESOTA
 Orig 09239

43°49'N-91°50'W

RNAV (GPS) RWY 34