

GLADEWATER, TEXAS

AL-6562 (FAA)

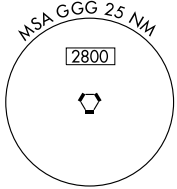
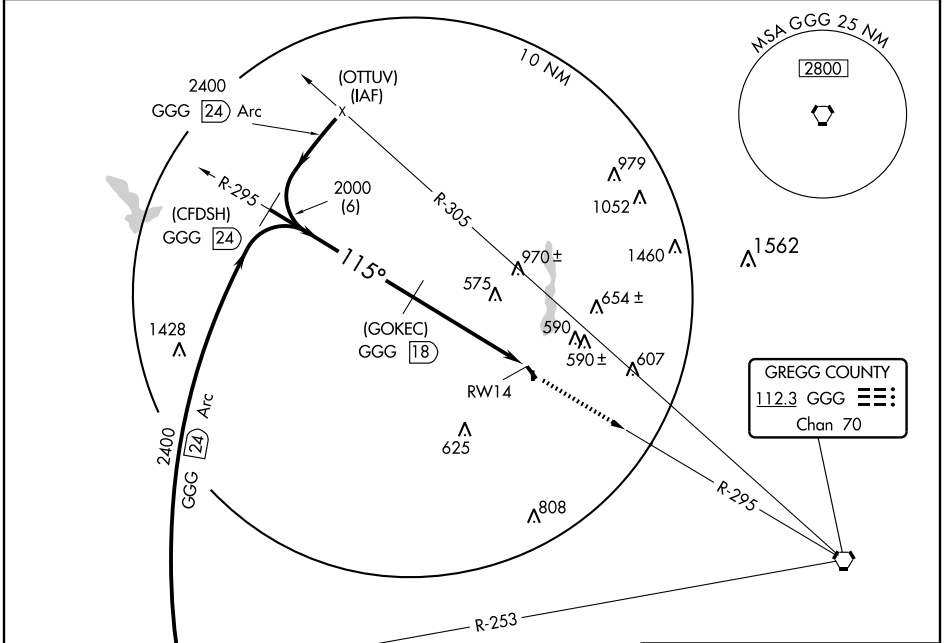
VOR/DME or GPS RWY 14

GLADEWATER MUNI (Ø7F)

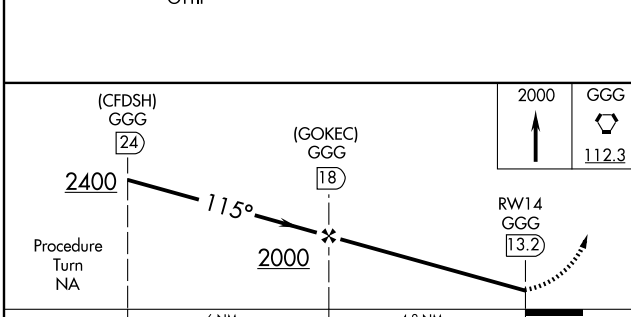
VORTAC GGG 112.3 Chan 70	APP CRS 115°	Rwy Idg TDZE Apt Elev 3301 297 297
--	------------------------	--

<p>▼ Use Gregg County altimeter setting; when not received procedure not authorized.</p> <p>▲ NA</p>	MISSED APPROACH: Climb to 2000 direct GGG VORTAC.
--	---

LONGVIEW APP CON ★ 118.25 270.3	CTAF 122.9
---	----------------------



GREGG COUNTY
112.3 GGG
Chan 70



CATEGORY	A	B	C	D
S-14	880-1	583 (600-1)	880-1½ 583 (600-1½)	NA
CIRCLING	880-1	583 (600-1)	880-1½ 583 (600-1½)	NA

MIRL Rwy 14-32					
Knots	60	90	120	150	180
Min:Sec					

SC-2, 22 OCT 2009 to 19 NOV 2009

SC-2, 22 OCT 2009 to 19 NOV 2009

GLADEWATER, TEXAS
Amdt 2B 04050

32°32' N-94°58' W

GLADEWATER MUNI (Ø7F) VOR/DME or GPS RWY 14