

ROGERS CITY, MICHIGAN

AL-6561 (FAA)

# RNAV (GPS) RWY 27

ROGERS CITY / PRESQUE ISLE COUNTY (PZQ)

APP CRS <b>275°</b>	Rwy Idg <b>3725</b>
	TDZE <b>670</b>
	Apt Elev <b>670</b>

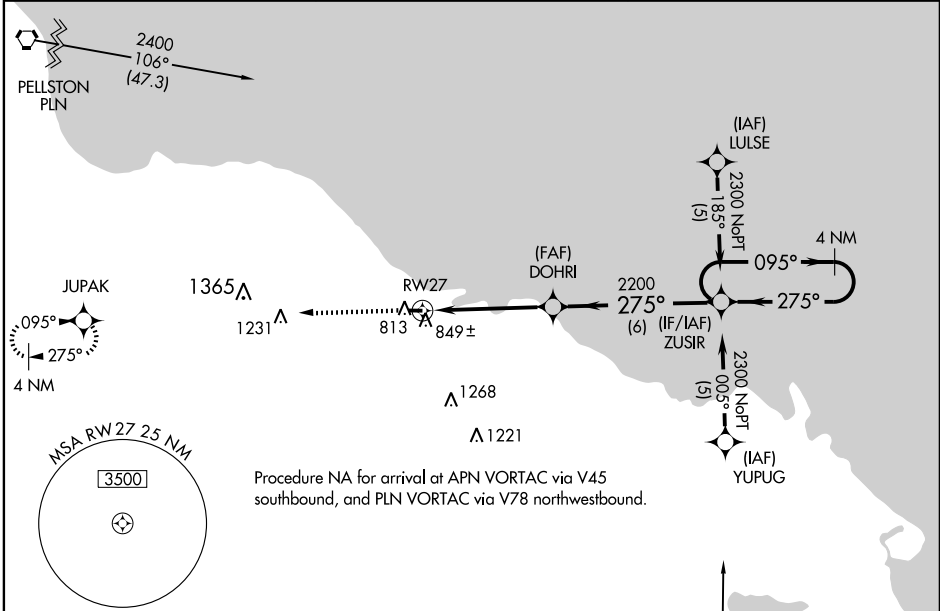
**⚠** DME/DME RNP-0.3 NA. Circling NA at night to Rwy 9.  
**⚠** NA If local altimeter setting not received, use Alpena County Rgnl altimeter setting and increase all MDAs 60 feet.  
 VDP NA with Alpena County Rgnl altimeter setting.

MISSED APPROACH: Climb to 2500 direct JUPAK and hold.

AWOS-3  
**118.125**

ALPENA APP CON ★  
**128.425 379.3**

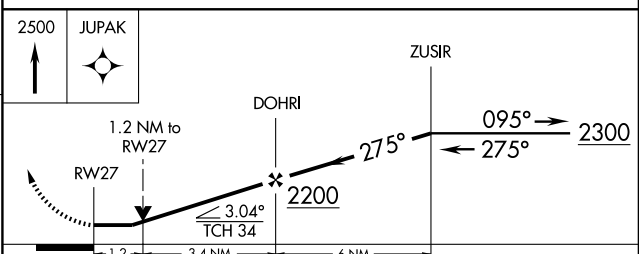
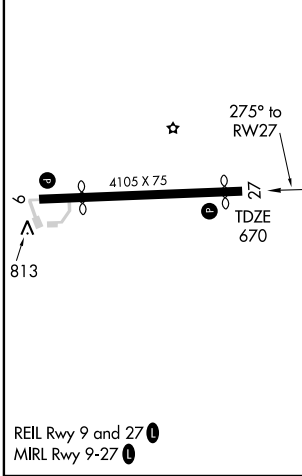
CTAF  
**122.9**



EC-1, 22 OCT 2009 to 19 NOV 2009

EC-1, 22 OCT 2009 to 19 NOV 2009

ELEV 670	Rwy 9 Idg 3885'
	Rwy 27 Idg 3725'



CATEGORY	A	B	C	D
LNAV MDA	1100-1	430 (500-1)	1100-1¼ 430 (500-1¼)	NA
CIRCLING	1200-1 530 (600-1)	1220-1 550 (600-1)	1220-1½ 550 (600-1½)	NA

ROGERS CITY, MICHIGAN  
Orig 07242

ROGERS CITY / PRESQUE ISLE COUNTY (PZQ)

45°24'N - 83°49'W

# RNAV (GPS) RWY 27