

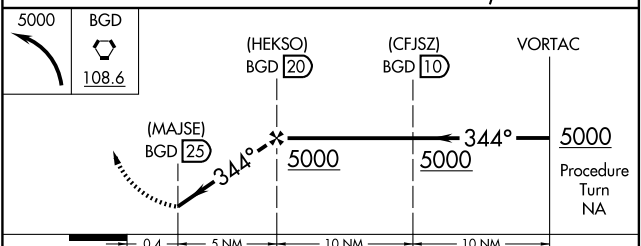
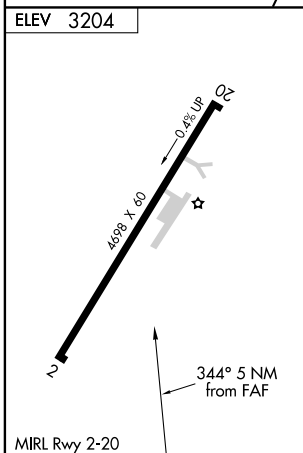
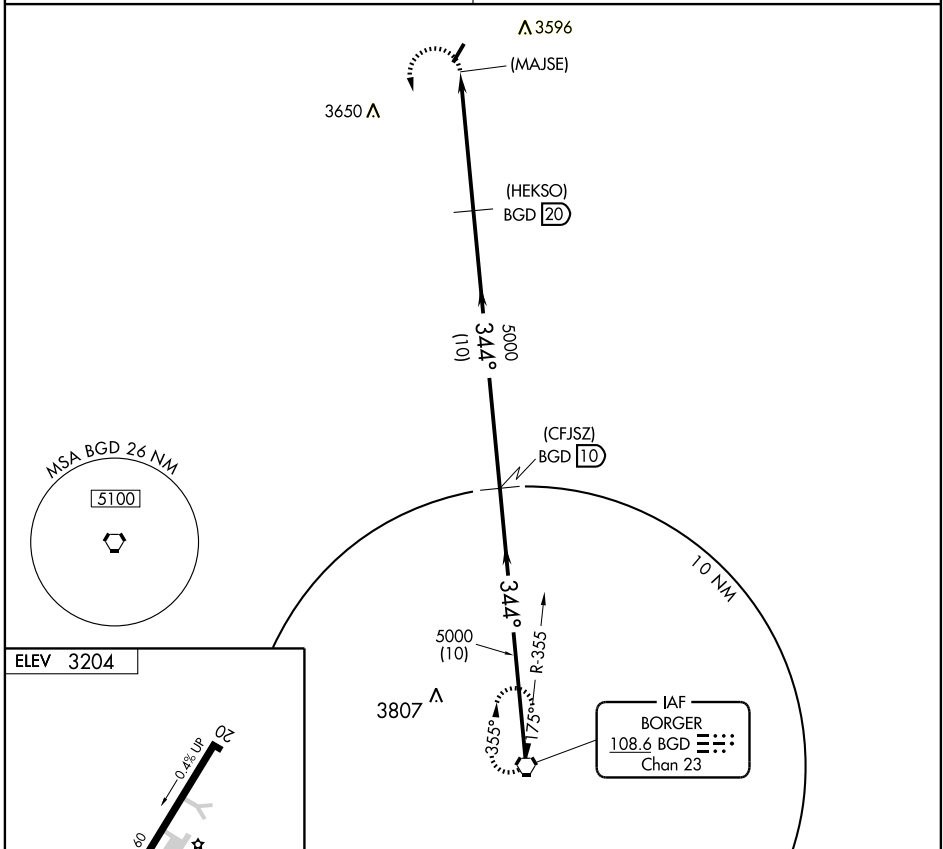
GRUVER, TEXAS

AL-6557 (FAA)

VOR/DME or GPS-B
GRUVER MUNI (E19)

VORTAC BGD 108.6 Chan 23	APP CRS 344°	Rwy Idg TDZE Apt Elev N/A N/A 3204
--	------------------------	--

▲ NA Use Liberal, KS altimeter setting.	MISSED APPROACH: Climbing left turn to 5000 direct BGD VORTAC and hold.
ALBUQUERQUE CENTER 127.85 285.475	CTAF 122.9



CATEGORY						A	B	C	D	
Knots						60	90	120	150	180
Min:Sec										
CIRCLING						4080-1 876 (900-1)	4080-1¼ 876 (900-1¼)	4080-2½ 876 (900-2½)	NA	

GRUVER, TEXAS
Orig 08157

36°14'N-101°26'W

GRUVER MUNI (E19)
VOR/DME or GPS-B

SC-2, 22 OCT 2009 to 19 NOV 2009

SC-2, 22 OCT 2009 to 19 NOV 2009