

GLENWOOD, MINNESOTA

AL-6556 (FAA)

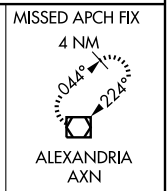
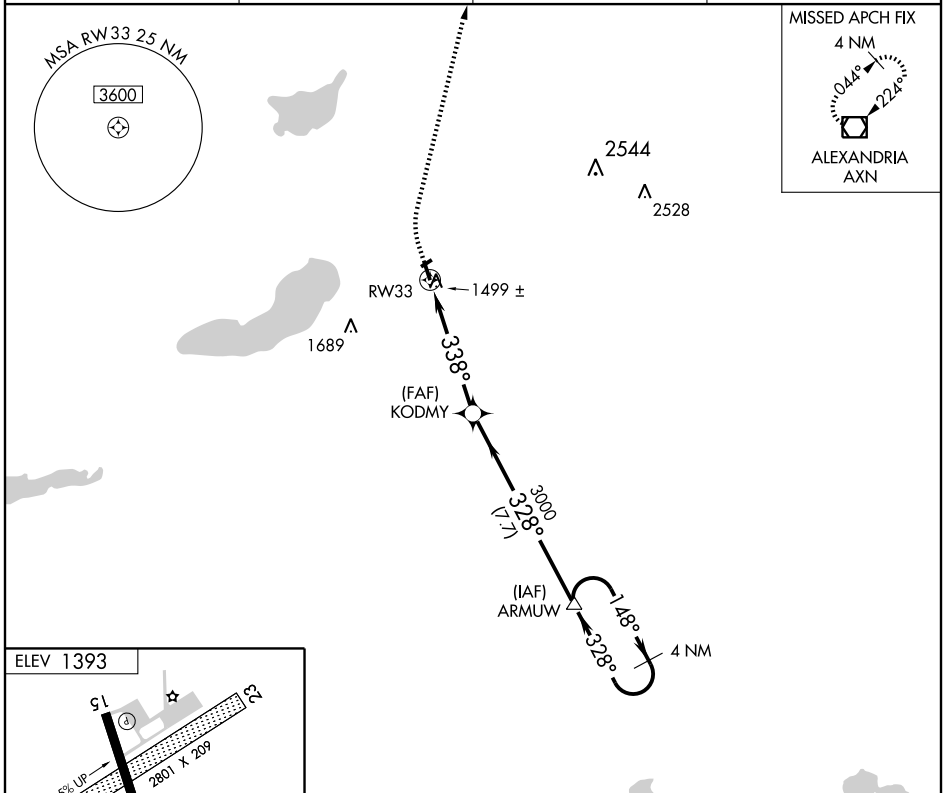
APP CRS 338°	Rwy Idg 4500
	TDZE 1388
	Apt Elev 1393

GPS RWY 33

GLENWOOD MUNI (GHW)

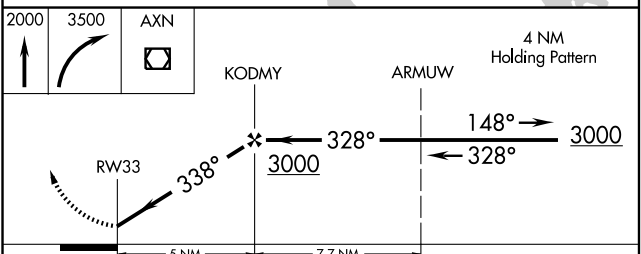
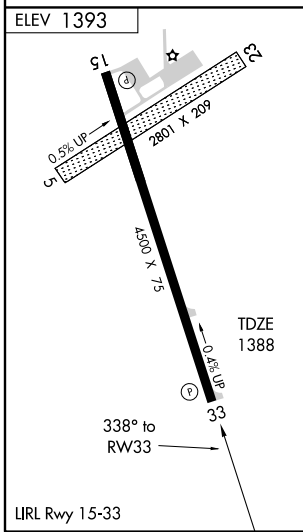
<p>▼</p> <p>▲ NA</p>	<p>MISSED APPROACH: Climb to 2000, then climbing right turn to 3500 direct AXN VOR/DME and hold.</p>		
----------------------	--	--	--

AWOS-3 346	MINNEAPOLIS CENTER 126.1 269.2	GCO 121.725	CTAF 122.9
----------------------	--	-----------------------	----------------------



NC-1, 22 OCT 2009 to 19 NOV 2009

NC-1, 22 OCT 2009 to 19 NOV 2009



CATEGORY	A	B	C	D
S-33	1760-1 372 (400-1)			NA
CIRCLING	1820-1 427 (500-1)	1860-1 467 (500-1)	1860-1½ 467 (500-1½)	NA

GLENWOOD, MINNESOTA
Orig 09267

45°39'N-95°19'W

GLENWOOD MUNI (GHW) GPS RWY 33