

CRETE, NEBRASKA

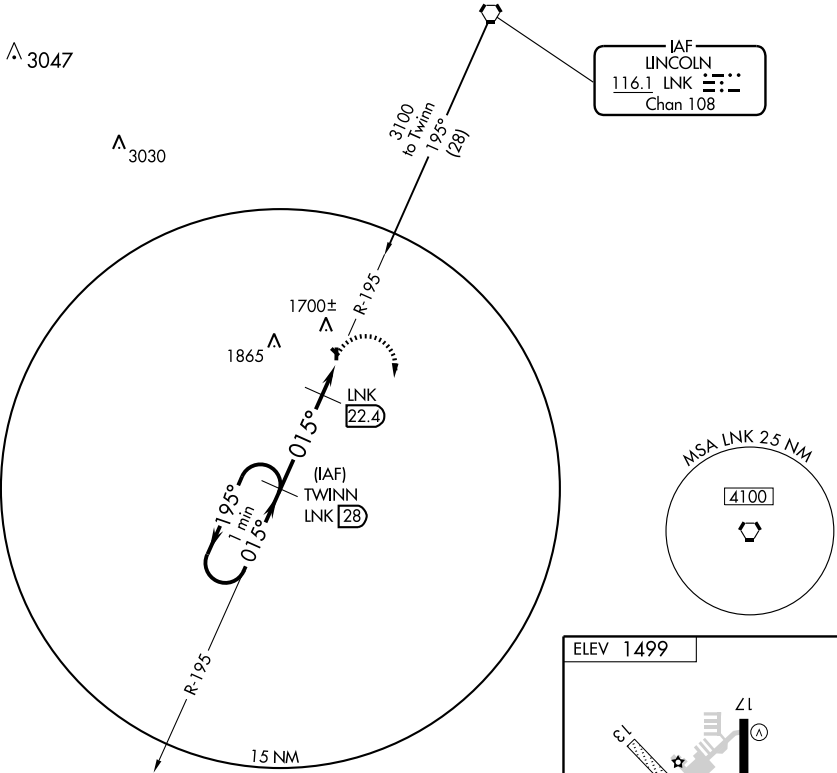
AL-6555 (FAA)

VORTAC LNK	APP CRS	Rwy Idg	4201
116.1	015°	TDZE	1497
Chan 108		Apt Elev	1499

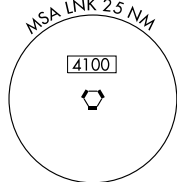
# VOR/DME RWY 35

CRETE MUNI (CEK)

<p><b>▽</b> NA Use Lincoln altimeter setting.</p>	<p>MISSED APPROACH: Climbing right turn to 3100 via LNK R-195 to TWINN/LNK 28 DME and hold.</p>
<p>LINCOLN APP CON *</p> <p><b>124.0 270.3</b></p>	<p>UNICOM</p> <p><b>122.8 (CTAF)</b></p>

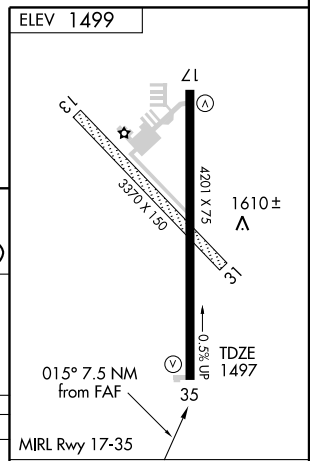
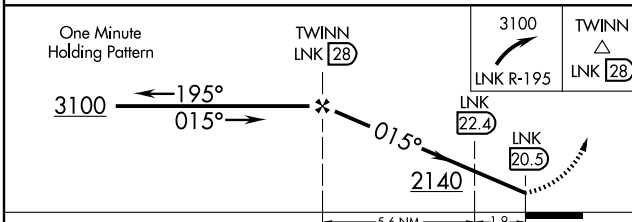


IAF  
LINCOLN  
116.1 LNK  
Chan 108



NC-2, 22 OCT 2009 to 19 NOV 2009

NC-2, 22 OCT 2009 to 19 NOV 2009



CATEGORY	A	B	C	D
S-35	2080-1	583 (600-1)		NA
CIRCLING	2140-1	641 (700-1)		NA

Knots	60	90	120	150	180
Min:Sec					

CRETE, NEBRASKA  
Amdt 3B 08157

40°37'N-96°56'W

# CRETE MUNI (CEK) VOR/DME RWY 35