

HUTCHINSON, MINNESOTA

AL-6554 (FAA)

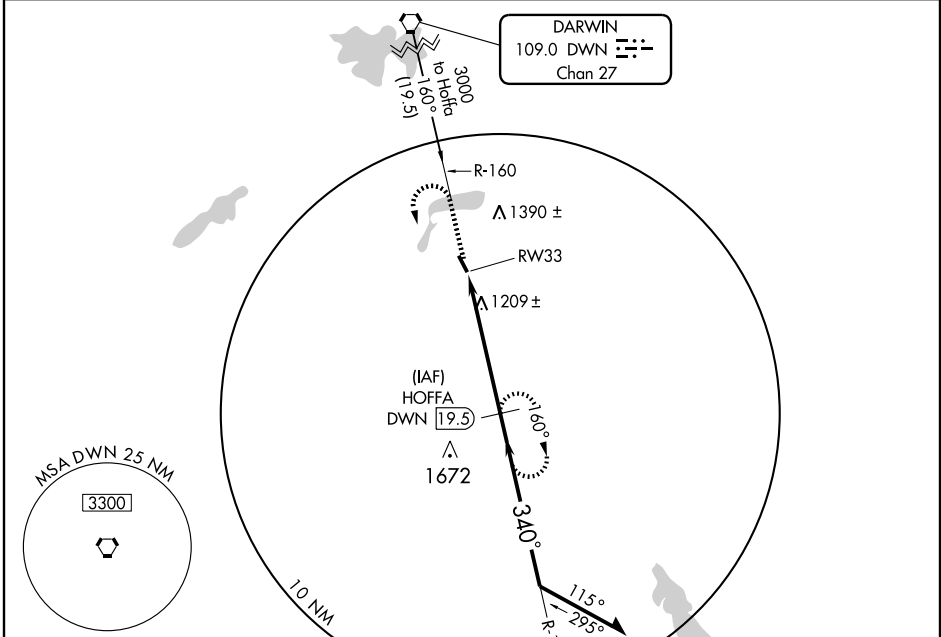
# VOR/DME or GPS RWY 33

HUTCHINSON MUNI-BUTLER FIELD (HCD)

VORTAC DWN <b>109.0</b> Chan 27	APP CRS <b>340°</b>	Rwy Idg TDZE Apt Elev	<b>4000</b> <b>1060</b> <b>1060</b>
---------------------------------------	------------------------	-----------------------------	---

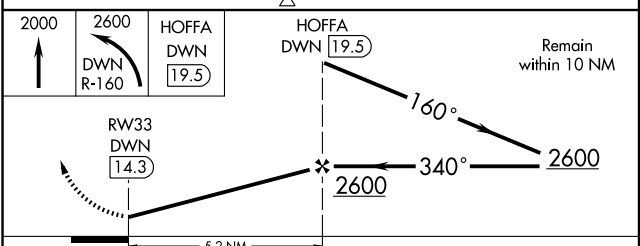
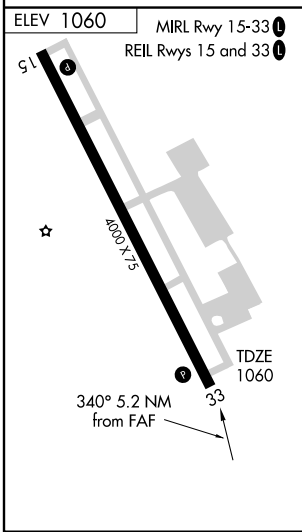
MISSED APPROACH: Climb to 2000 then climbing left turn to 2600 via DWN R-160 to HOFFA/19.5 DME and hold.

AWOS-3 <b>118.525</b>	MINNEAPOLIS CENTER <b>127.1 290.2</b>	GCO <b>121.725</b>	UNICOM <b>122.8 (CTAF)</b>
--------------------------	--	-----------------------	-------------------------------



NC-1, 22 OCT 2009 to 19 NOV 2009

NC-1, 22 OCT 2009 to 19 NOV 2009



CATEGORY	A	B	C	D
S-33	1460-1 400 (400-1)			NA
CIRCLING	1540-1	480 (500-1)	1540-1½ 480 (500-1½)	NA

HUTCHINSON, MINNESOTA  
Amdt 2 09015

HUTCHINSON MUNI-BUTLER FIELD (HCD)  
44°52'N-94°23'W **VOR/DME or GPS RWY 33**