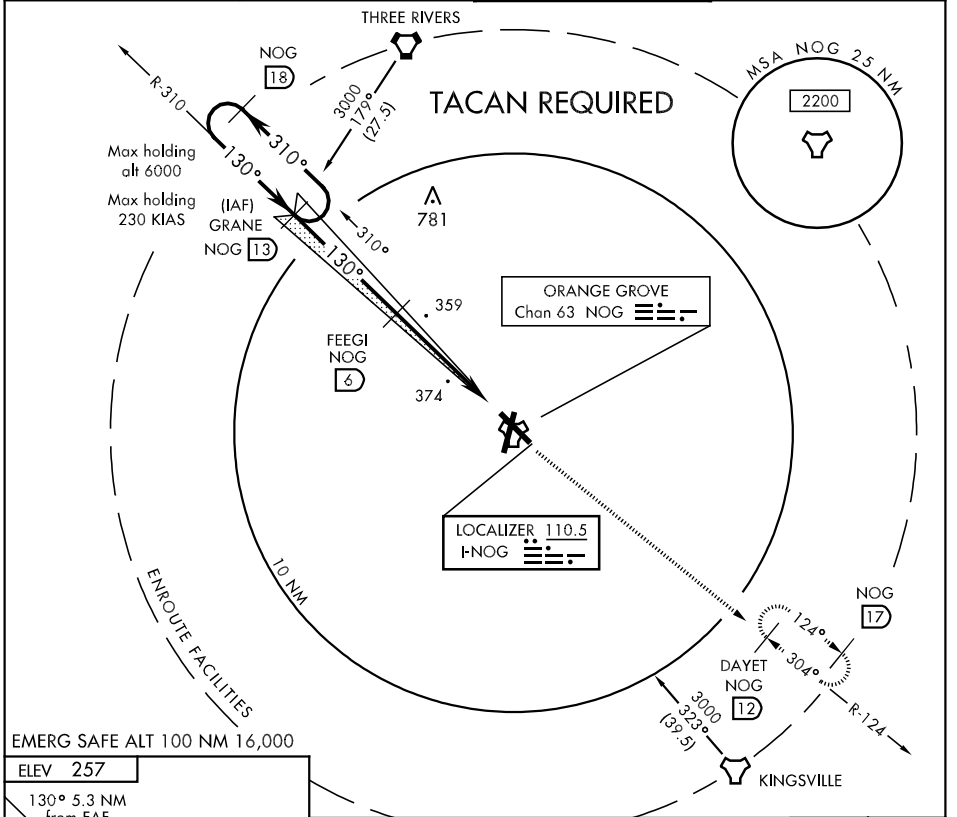


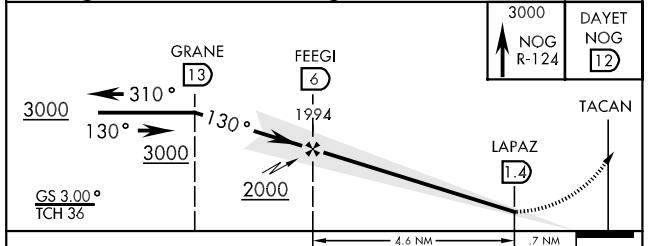
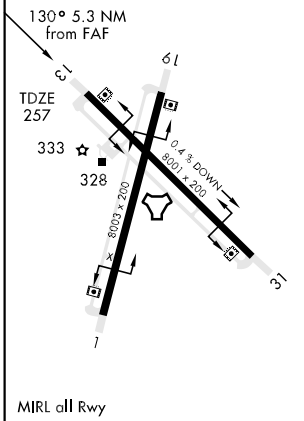
LOC I-NOG 110.5	APCH CRS 130°	Rwy Idg TDZE Arpt Elev 8001 257 257	AL-6553 [USN]	ORANGE GROVE NALF (KNOG)
---------------------------	-------------------------	---	---------------	--------------------------

MISSED APPROACH: Climb to 3000 via NOG TACAN R-124 to DAYET and hold.

ATIS ★ 254.325	KINGSVILLE APP CON 119.90 290.45	ORANGE GROVE TOWER ★ 281.425 318.85	GND CON 229.4
--------------------------	--	---	-------------------------



ELEV 257



CATEGORY	A	B	C	D
S-ILS 13		457-¾	200 (200-¾)	
S-LOC 13	600-1	343 (400-1)		600-1¼ 343 (400-1¼)
CIRCLING	640-1	720-1	720-1½	820-2
	383 (400-1)	463 (500-1)	463 (500-1½)	563 (600-2)

SC-3, 22 OCT 2009 to 19 NOV 2009

SC-3, 22 OCT 2009 to 19 NOV 2009