

RNAV (GPS) RWY 15

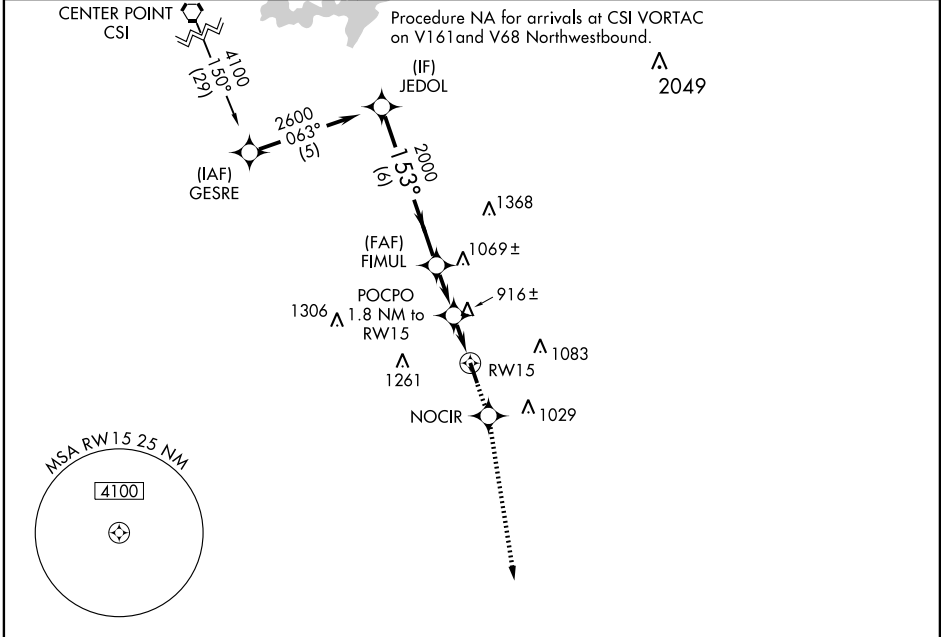
CASTROVILLE MUNI (CVB)

APP CRS 153°	Rwy Idg 4600
	TDZE 771
	Apt Elev 771

▲ NA DME/DME RNP-0.3 NA. When local altimeter setting not received, use San Antonio Intl altimeter setting.

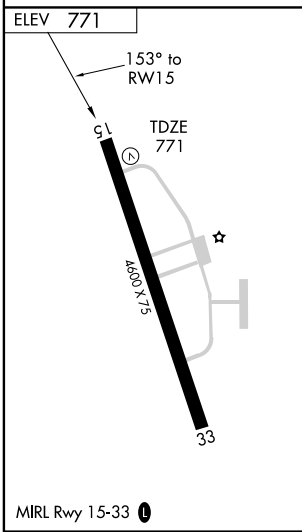
MISSED APPROACH: Climb to 2500 direct NOCIR and via 163° track to COTOT and hold.

AWOS-3 119.25	HONDO MUNI ASOS 119.675	SAN ANTONIO APP CON 118.05 353.5	UNICOM 122.8 (CTAF) 0
-------------------------	-----------------------------------	--	---------------------------------



SC-3, 22 OCT 2009 to 19 NOV 2009

SC-3, 22 OCT 2009 to 19 NOV 2009



	2500	NOCIR	TRK 163°	COTOT
	↑	✧	↖	✧
JEDOL	2600	FIMUL	POCPO	RWY 15
	753°	2000	1.8 NM to RWY 15	
Procedure Turn NA		3.04° TCH 40	1360	
	6 NM	1.9 NM	1.8 NM	
CATEGORY	A	B	C	D
LNAV MDA	1240-1	469 (500-1)	1240-1¼ 469 (500-1¼)	NA
CIRCLING	1260-1 489 (500-1)	1380-1 609 (700-1)	1440-1¾ 669 (700-1¾)	NA