

LOC RWY 6

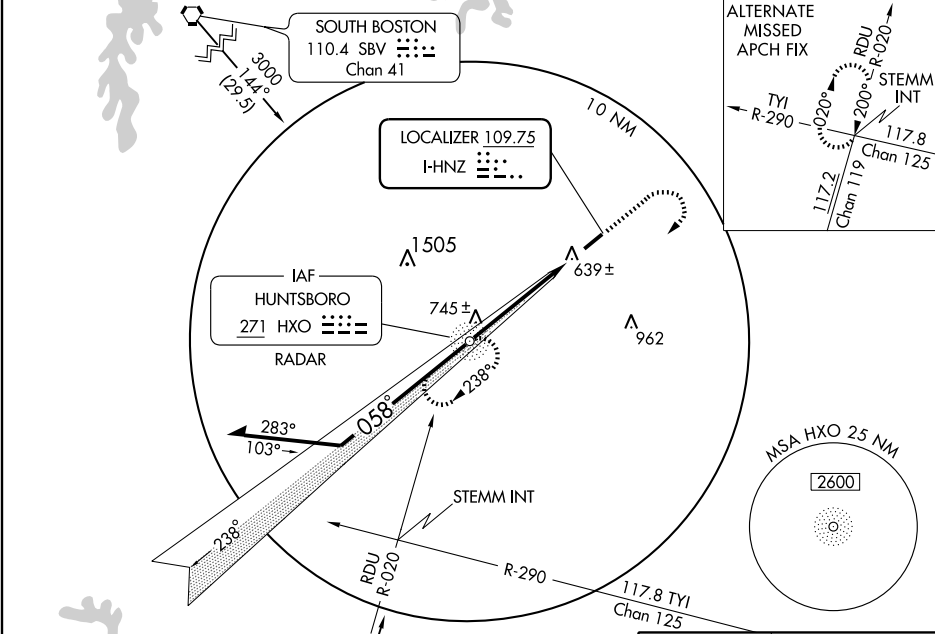
OXFORD/HENDERSON-OXFORD (H/NZ)

LOC I-HNZ	APP CRS	Rwy Idg	5002
109.75	058°	TDZE	526
		Apt Elev	526

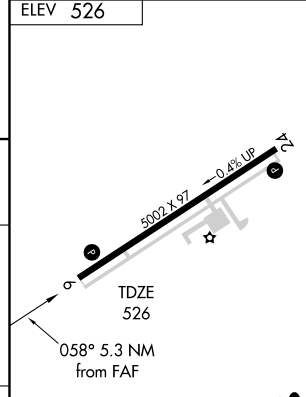
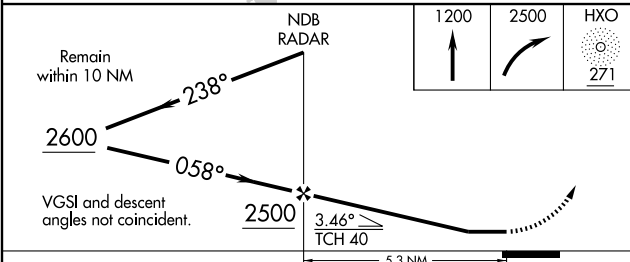
▼ ADF or RADAR required. Visibility reduction by helicopters NA. When local altimeter setting not received, use Roxboro altimeter setting and increase all MDA 80 feet; increase S-6 Cats C and D visibility ¼ mile.

MISSED APPROACH: Climb to 1200 then climbing right turn to 2500 direct HXO NDB/RADAR and hold, continue climb-in-hold to 2500.

AWOS-3 118.625	RALEIGH APP CON 132.35 256.9	GCO 135.075	UNICOM 122.8 (CTAF) ①
--------------------------	--	-----------------------	---------------------------------



ADF REQUIRED



CATEGORY	A	B	C	D
S-6	900-1	374 (400-1)		900-1¼ 374 (400-1¼)
CIRCLING	940-1 414 (500-1)	980-1 454 (500-1)	980-1½ 454 (500-1½)	1080-2 554 (600-2)

FAF to MAP 5.3 NM					
Knots	60	90	120	150	180
Min:Sec	5:18	3:32	2:39	2:07	1:46

LOC RWY 6

SE-2, 22 OCT 2009 to 19 NOV 2009

SE-2, 22 OCT 2009 to 19 NOV 2009

REIL Rwy 6 ①
MIRL Rwy 6-24 ①