

CAIRO, GEORGIA

AL-6549 (FAA)

RNAV (GPS) RWY 31

CAIRO-GRADY COUNTY (70J)

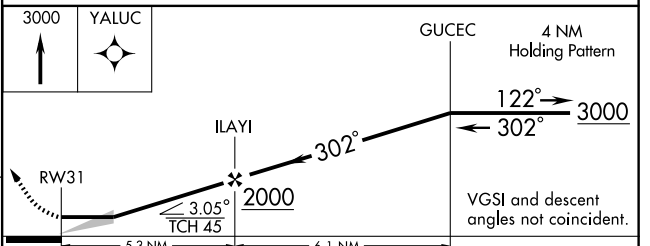
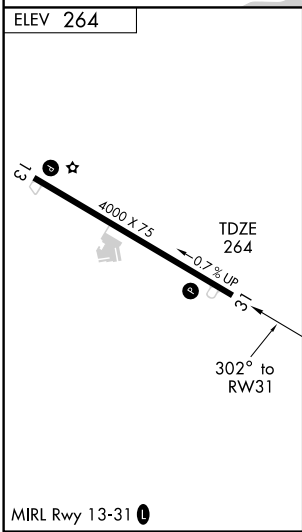
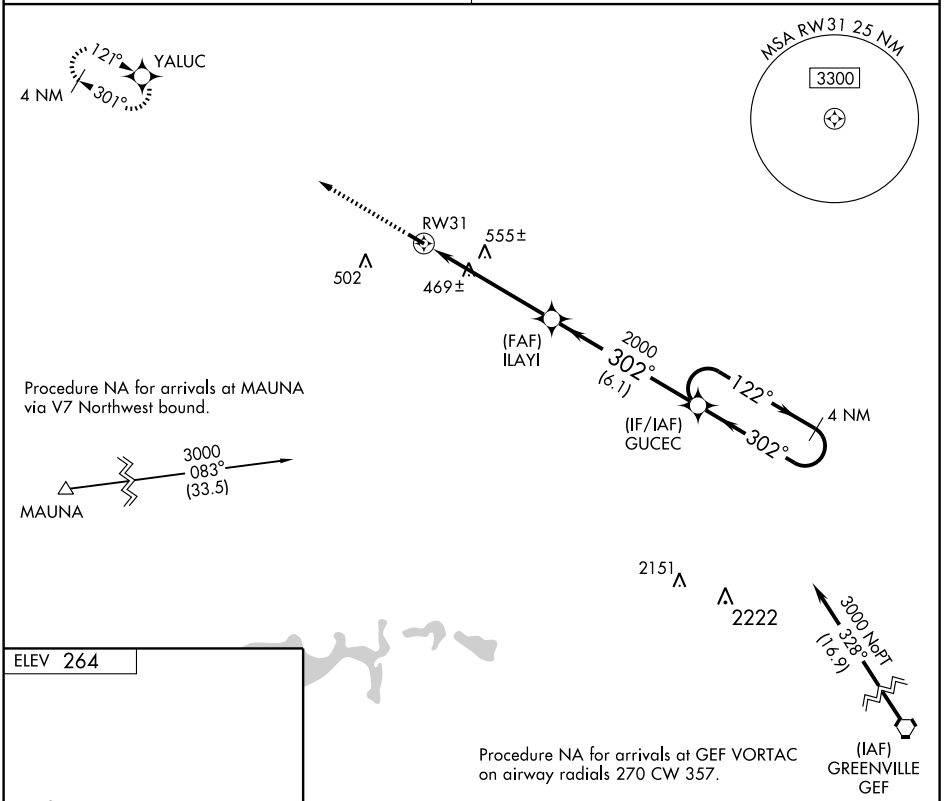
APP CRS 302°	Rwy Idg 4000
	TDZE 264
	Apt Elev 264

NA DME/DME RNP-0.3 NA. Use Moultrie altimeter setting, when not received, use Tallahassee Rgnl altimeter setting and increase all MDAs 60 feet and visibility Cats C and D ¼ mile.

MISSED APPROACH: Climb to 3000 direct YALUC and hold.

TALLAHASSEE APP CON ★
128.7 254.3

UNICOM
122.7 (CTAF)



CATEGORY	A	B	C	D
LNAV MDA	860-1	596 (600-1)	860-1½ 596 (600-1½)	860-1¾ 596 (600-1¾)
CIRCLING	900-1	636 (700-1)	900-1¾ 636 (700-1¾)	920-2 656 (700-2)

CAIRO, GEORGIA
Orig 09015

30°53'N-84°09'W

CAIRO-GRADY COUNTY (70J)

RNAV (GPS) RWY 31

SE-4, 22 OCT 2009 to 19 NOV 2009

SE-4, 22 OCT 2009 to 19 NOV 2009