

RNAV (GPS) RWY 19

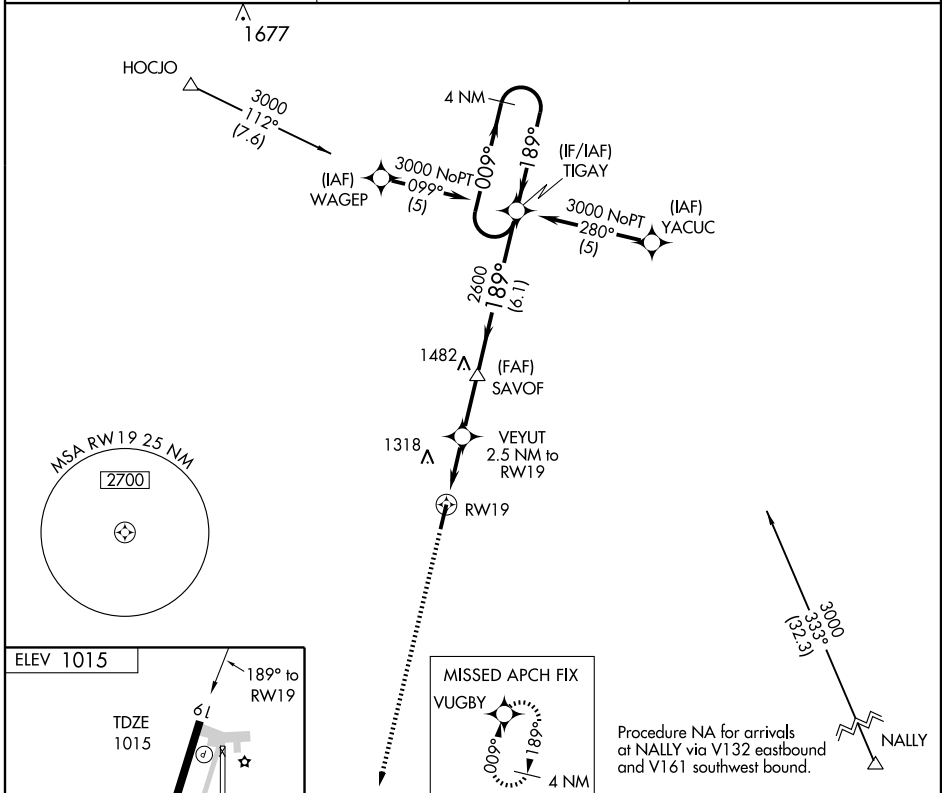
IOLA/ALLEN COUNTY (K88)

APP CRS 189°	Rwy Idg 5500
	TDZE 1015
	Apt Elev 1015

NA DME/DME RNP-0.3 NA. Visibility reduction by helicopters NA. When local altimeter setting not received, use Chanute altimeter setting and increase all MDA 40 feet.

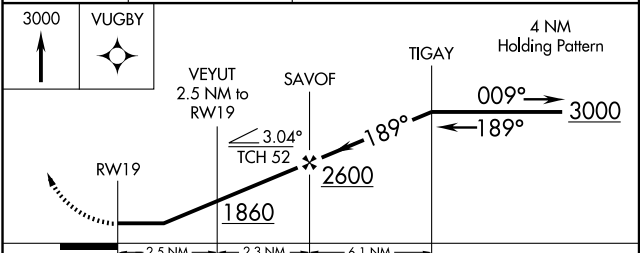
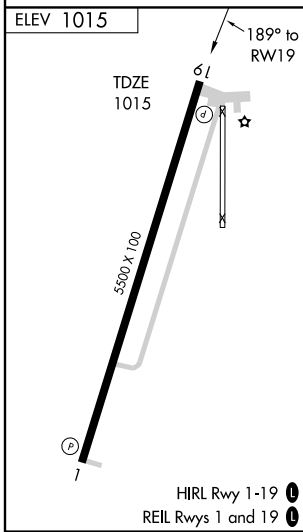
MISSED APPROACH: Climb to 3000 direct VUGBY and hold.

AWOS-3 128.325	KANSAS CITY CENTER 127.725 270.25	UNICOM 122.8 (CTAF)
--------------------------	---	-------------------------------



NC-2, 22 OCT 2009 to 19 NOV 2009

NC-2, 22 OCT 2009 to 19 NOV 2009



CATEGORY	A	B	C	D
LNAV MDA	1460-1 445 (500-1)		1460-1¼ 445 (500-1¼)	NA
CIRCLING	1520-1 505 (600-1)		1620-1¾ 605 (700-1¾)	NA