

RNAV (GPS) RWY 1

IOLA/ALLEN COUNTY (K88)

APP CRS	Rwy Idg	5500
009°	TDZE	1013
	Apt Elev	1015

▽ DME/DME RNP-0.3 NA. Visibility reduction by helicopters NA. When local altimeter setting not received, use Chanute altimeter setting and increase all MDA 40 feet. VDP NA when using Chanute altimeter setting.

△ NA

MISSED APPROACH: Climb to 3000 direct TIGAY and hold.

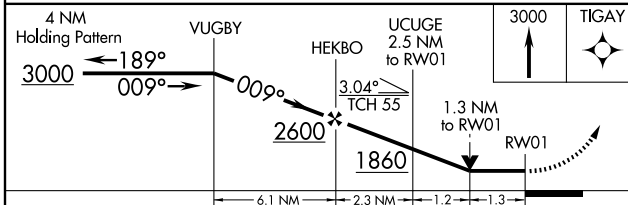
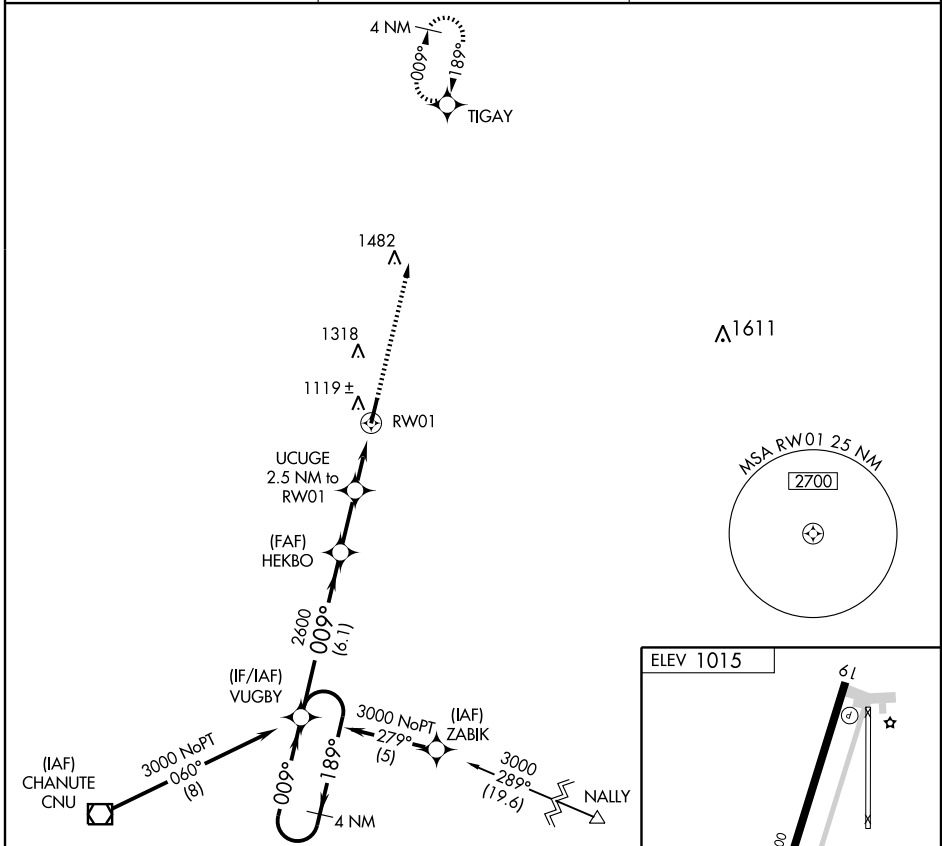
AWOS-3
128.325

KANSAS CITY CENTER
127.725 270.25

UNICOM
122.8 (CTAF) ①

NC-2, 22 OCT 2009 to 19 NOV 2009

NC-2, 22 OCT 2009 to 19 NOV 2009



CATEGORY	A	B	C	D
LNVA MDA	1460-1 447 (500-1)		1460-1¼ 447 (500-1¼)	NA
CIRCLING	1520-1 505 (600-1)		1620-1¾ 605 (700-1¾)	NA

