

FALLS CITY, NEBRASKA

AL-6543 (FAA)

# RNAV (GPS) RWY 32

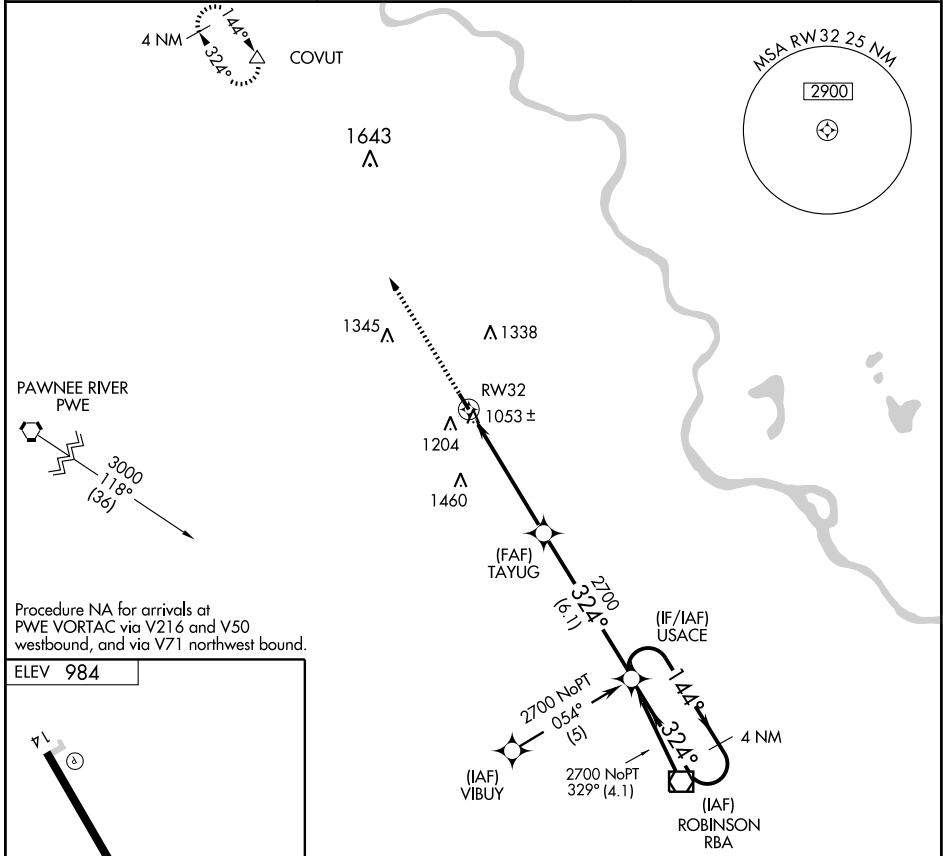
FALLS CITY/ BRENNER FIELD (FNB)

WAAS CH <b>45520</b> <b>W32A</b>	APP CRS <b>324°</b>	Rwy Idg <b>3999</b> TDZE <b>984</b> Apt Elev <b>984</b>
--	------------------------	---

Baro-VNAV NA below +16°C (4°F). DME/DME RNP-0.3 NA. VDP and Baro-VNAV NA when using Lincoln Muni altimeter setting. If local altimeter setting not received, use Lincoln Muni altimeter setting and increase all DAs/MDAs 240 feet.

MISSED APPROACH: Climb to 3400 direct COVUT WP and hold.

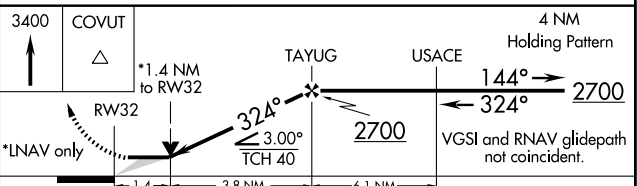
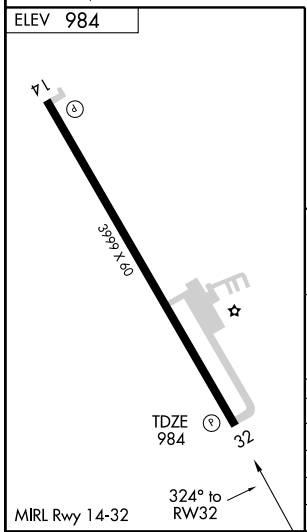
ASOS <b>119.27</b>	COLUMBUS RADIO <b>122.1R</b>	UNICOM <b>122.8</b> (CTAF)
-----------------------	---------------------------------	-------------------------------



NC-2, 22 OCT 2009 to 19 NOV 2009

NC-2, 22 OCT 2009 to 19 NOV 2009

Procedure NA for arrivals at PWE VORTAC via V216 and V50 westbound, and via V71 northwest bound.



CATEGORY	A	B	C	D
LPV DA	1240-1	256 (300-1)		NA
LNAV/VNAV DA	1420-1½	436 (500-1½)		NA
LNAV MDA	1460-1	476 (500-1)		NA
CIRCLING	1560-1½	576 (600-1½)		NA

FALLS CITY, NEBRASKA  
Amdt 1 08269

40°05'N-95°36'W

# FALLS CITY/ BRENNER FIELD (FNB) RNAV (GPS) RWY 32