

FALLS CITY, NEBRASKA

AL-6543 (FAA)

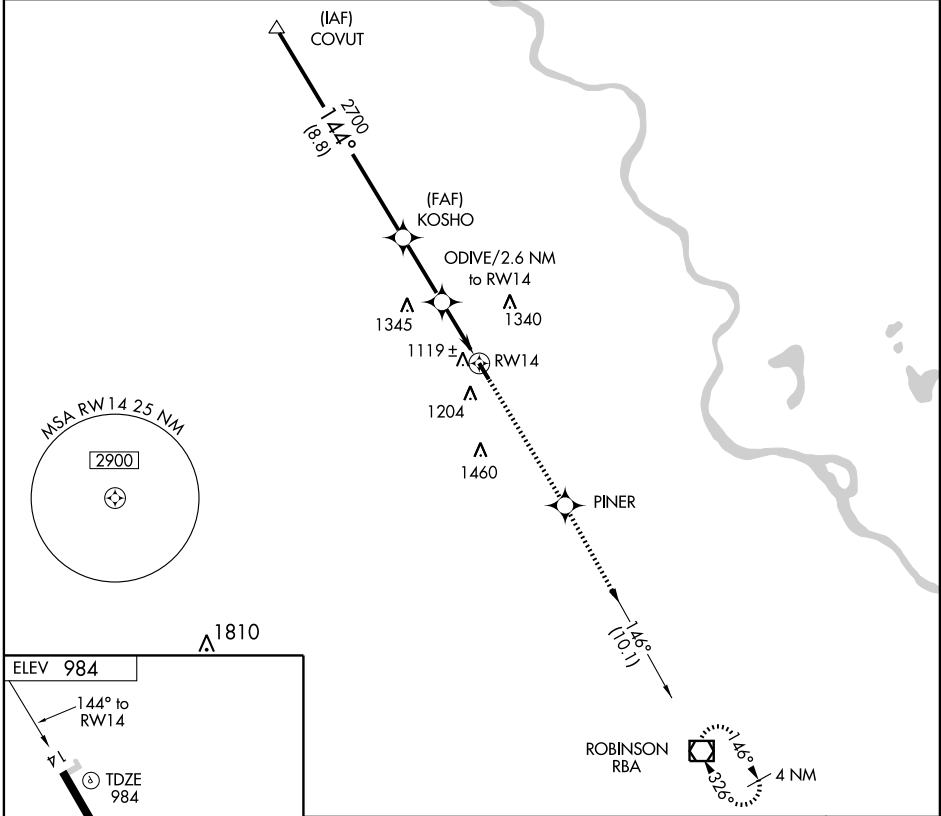
RNAV (GPS) RWY 14

FALLS CITY/ BRENNER FIELD (FNB)

APP CRS 144°	Rwy Idg 3999
	TDZE 984
	Apt Elev 984

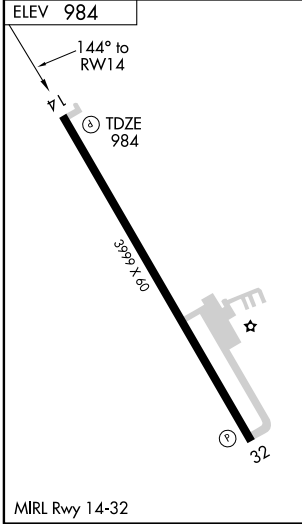
<p>▽ GPS or RNP-0.3 required. DME/DME RNP-0.3 NA.</p> <p>△ NA Circling Rwy 32 NA at night.</p>	<p>MISSED APPROACH: Climb to 2700 direct PINER WP and via 146° track to RBA VOR/DME and hold.</p>
--	--

ASOS 119.27	COLUMBUS RADIO 122.1R	UNICOM 122.8 (CTAF)
-----------------------	---------------------------------	-------------------------------



NC-2, 22 OCT 2009 to 19 NOV 2009

NC-2, 22 OCT 2009 to 19 NOV 2009



	COVUT	KOSHO	2700	PINER	146° TRK	RBA
	3400	2700	1840	108.2		
Procedure Turn NA	ODIVE/2.6 NM to RW14		1.2 NM to RW14			
VGSI and descent angles not coincident.						
	8.8 NM		2.7 NM	1.4 NM	1.2	
CATEGORY	A	B	C	D		
LNAV MDA	1380-1	396 (400-1)		NA		
CIRCLING	1560-1	576 (600-1)		NA		

FALLS CITY, NEBRASKA
Orig 06271

40°05'N-95°36'W

RNAV (GPS) RWY 14