

RNAV (GPS) RWY 36

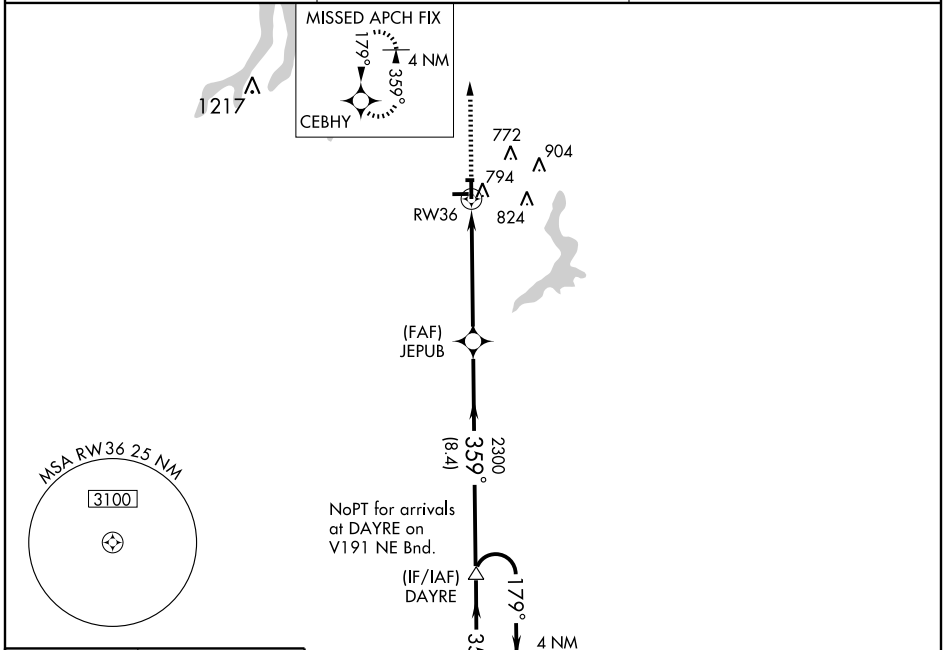
TAYLORVILLE MUNI (T.A.Z)

APP CRS 359°	Rwy Idg 4001
	TDZE 622
	Apt Elev 622

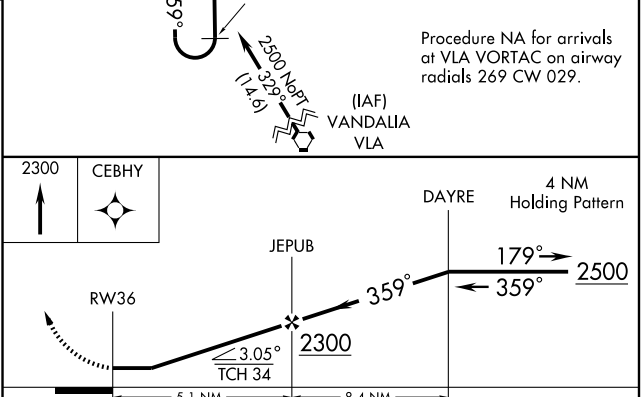
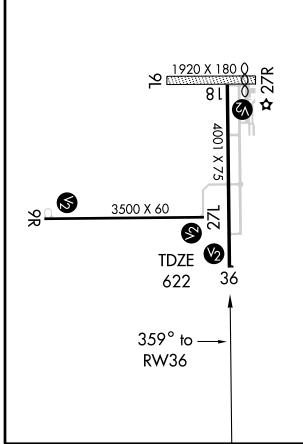
⚠ If local altimeter setting not received, use Springfield altimeter setting and increase all MDAs 80 feet. When VGSI inop, circling Rwy 18 NA at night.
⚠ DME/DME RNP-0.3 NA. LNAV MDA minimums NA at night.

MISSED APPROACH: Climb to 2300 direct CEBHY and hold.

AWOS-3 123.875 395.0	SPRINGFIELD APP CON ★ 118.6 323.0	UNICOM 122.8 (CTAF) 0
--------------------------------	---	---------------------------------



ELEV 622	Rwy 27R Idg 1600'
REIL Rwy 9R-27L and 18	
MIRL Rwy 9R-27L and 18-36	



CATEGORY	A	B	C	D
LNAV MDA	1100-1	478 (500-1)	1100-1¼ 478 (500-1¼)	NA
CIRCLING	1160-1	538 (600-1)	1160-1½ 538 (600-1½)	NA

EC-3, 22 OCT 2009 to 19 NOV 2009

EC-3, 22 OCT 2009 to 19 NOV 2009