

BOLINGBROOK, ILLINOIS

AL-6535 (FAA)

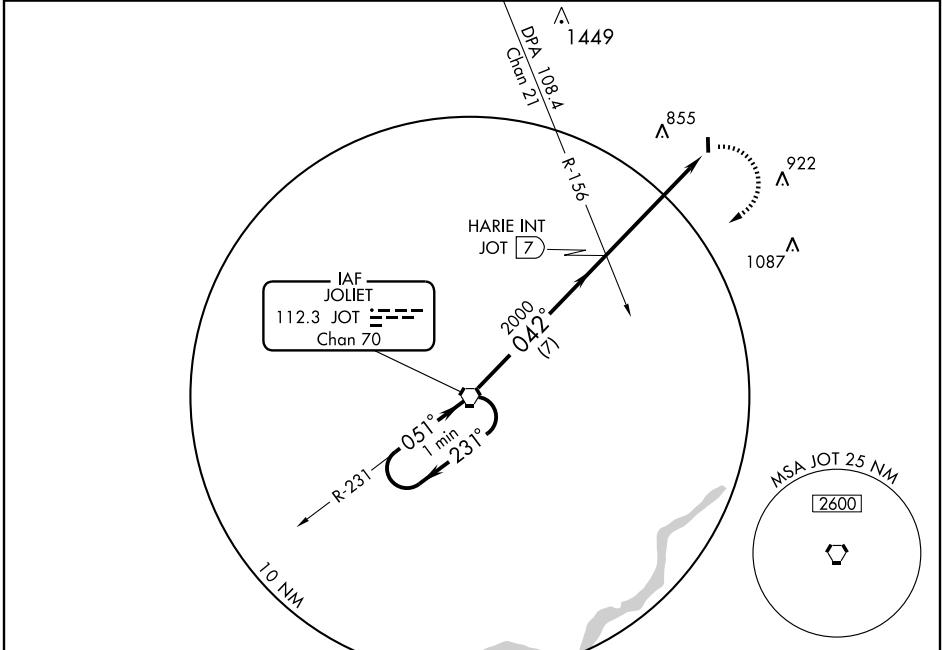
VOR-A

BOLINGBROOK'S CLOW INTL (1C5)

VORTAC JOT <b>112.3</b> Chan <b>70</b>	APP CRS <b>042°</b>	Rwy Idg TDZE Apt Elev	<b>N/A</b> <b>N/A</b> <b>670</b>
--	------------------------	-----------------------------	--

**▲** NA Use Lewis University altimeter setting. MISSED APPROACH: Climbing right turn to 2200 direct JOT VORTAC and hold.

CHICAGO APP CON **119.35 388.0** CTAF **122.9**

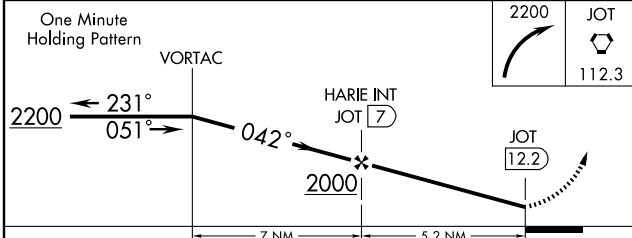
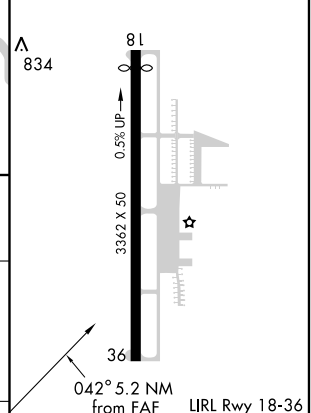


EC-3, 22 OCT 2009 to 19 NOV 2009

EC-3, 22 OCT 2009 to 19 NOV 2009

NoPT for arrivals on JOT VORTAC  
Airway Radials 171 CW 261.

ELEV 670 Rwy 18 ldg 3172'



CATEGORY	A	B	C	D	FAF to MAP 5.2 NM												
CIRCLING	1220-1	550 (600-1)	NA		<table border="1"> <tr> <td>Knots</td> <td>60</td> <td>90</td> <td>120</td> <td>150</td> <td>180</td> </tr> <tr> <td>Min:Sec</td> <td>5:12</td> <td>3:28</td> <td>2:36</td> <td>2:05</td> <td>1:44</td> </tr> </table>	Knots	60	90	120	150	180	Min:Sec	5:12	3:28	2:36	2:05	1:44
Knots	60	90	120	150	180												
Min:Sec	5:12	3:28	2:36	2:05	1:44												

BOLINGBROOK, ILLINOIS  
Orig 07298

41°42'N - 88°08'W

BOLINGBROOK'S CLOW INTL (1C5)

VOR-A