

RNAV (GPS) RWY 14

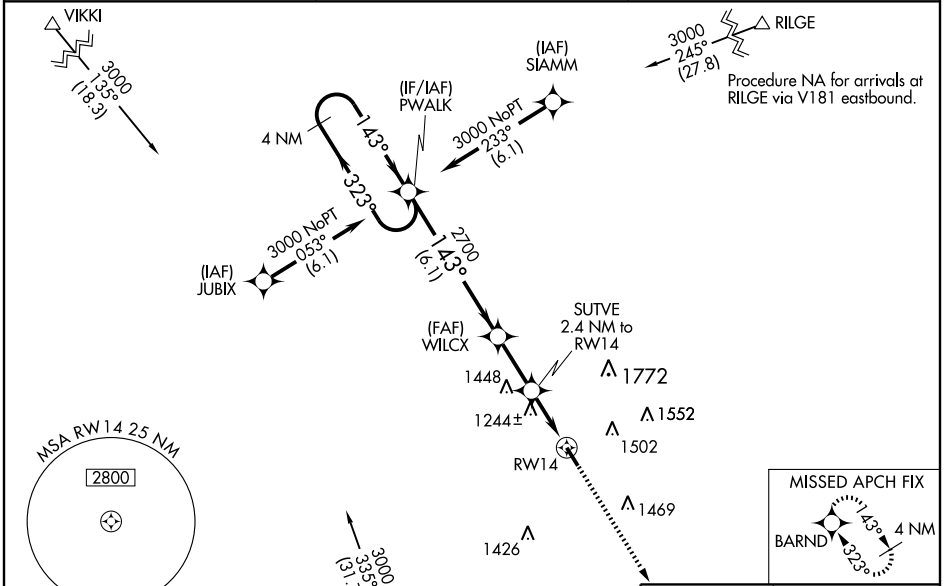
MARYVILLE/NORTHWEST MISSOURI RGNL (EVU)

WAAS CH 72807 W14A	APP CRS 143°	Rwy Idg TDZE 1142 Apt Elev 1145
--	------------------------	---

NA Baro-VNAV NA when using St. Joseph altimeter setting. For uncompensated Baro-VNAV systems, LNAV/VNAV NA below -17°C (2°F) or above 54°C (130°F). DME/DME RNP-0.3 NA. Visibility reduction by helicopters NA. When local altimeter setting not received, use St. Joseph altimeter setting and increase LPV DA to 1518 feet, LNAV/VNAV DA to 1742 feet and all MDA 140 feet, increase LPV visibility ¼ mile all Cats, LNAV/VNAV ½ mile all Cats, and LNAV Cat C ½ mile. Circling NA East of runway 18-36.

MISSED APPROACH:
Climb to 3000 direct BARND and hold.

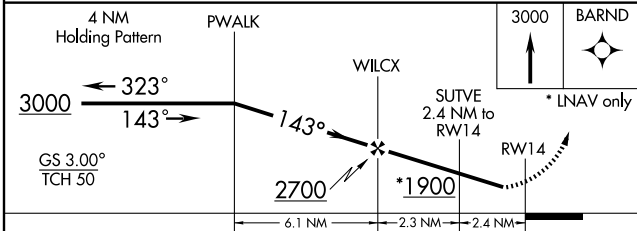
AWOS-3 118.225	MINNEAPOLIS CENTER 119.6 290.4	UNICOM 122.8 (CTAF)
--------------------------	--	-------------------------------



NC-3, 22 OCT 2009 to 19 NOV 2009

NC-3, 22 OCT 2009 to 19 NOV 2009

Procedure NA for arrivals at STJ Vortac via V50 eastbound.



CATEGORY	A	B	C	D
LPV DA	1392-1	250 (300-1)		NA
LNAV/VNAV DA	1616-1¾	474 (500-1¾)		NA
LNAV MDA	1500-1	358 (400-1)		NA
CIRCLING	1500-1 355 (400-1)	1600-1 455 (500-1)	1600-1½ 455 (500-1½)	NA

