

RNAV (GPS) RWY 23

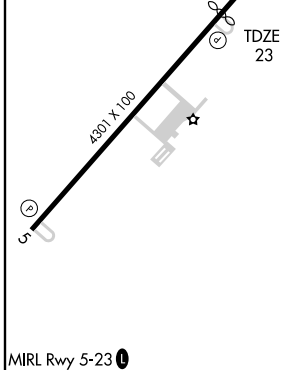
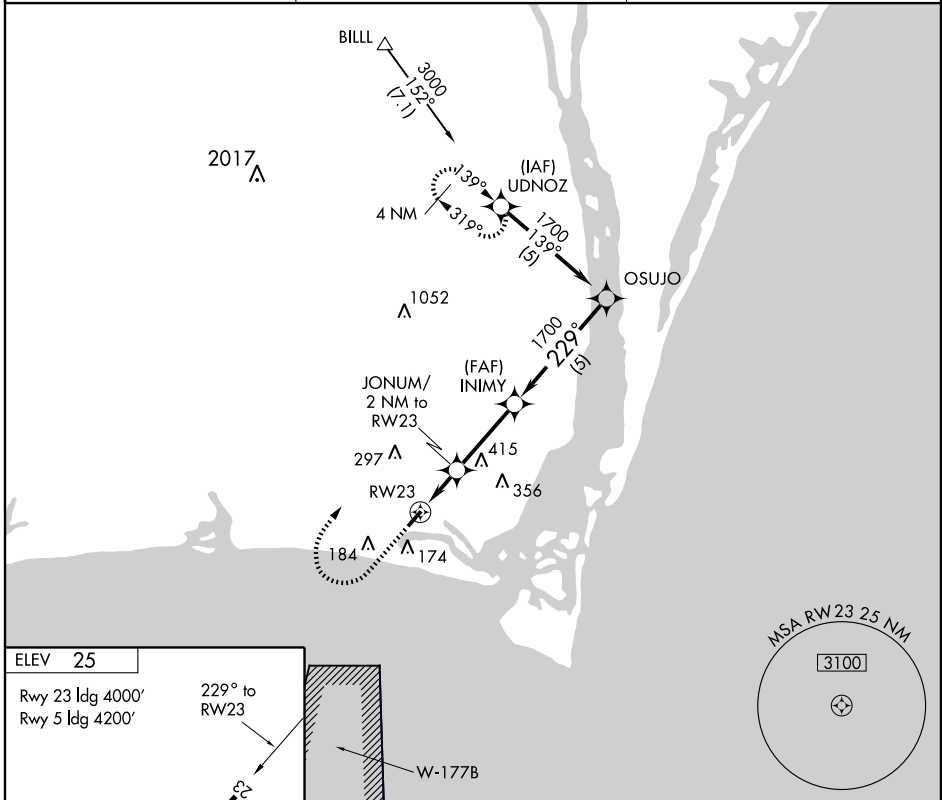
OAK ISLAND/BRUNSWICK COUNTY (SUT)

APP CRS	Rwy Idg	4000
229°	TDZE	23
	Apt Elev	25

▽ GPS or RNP-0.3 Required. DME/DME RNP-0.3 NA.
△ NA If local altimeter setting not received, use Wilmington altimeter setting and increase all MDAs 60 feet.
 VDP NA with Wilmington altimeter setting.

MISSED APPROACH: Climb to 1000 then climbing right turn to 3000 direct UDNOZ WP and hold.

AWOS-3 124.175	WILMINGTON APP CON 118.25 284.65	UNICOM 123.0 (CTAF) 0
--------------------------	--	---------------------------------



ELEV 25	Rwy 23 Idg 4000' Rwy 5 Idg 4200'		229° to RW23	TDZE 23	1000	3000	UDNOZ	INIMY	OSUJO
	4301 X 100								
	JONUM/ 2 NM to RW23		1.3 NM to RW23	700	1700	1700	229°	1700	Procedure Turn NA
	RW23		1.3	0.7	3.1 NM	≤ 3.00° TCH 40	5 NM		
CATEGORY	A		B		C		D		
LNAV MDA	480-1 457 (500-1)		480-1¼ 457 (500-1¼)		540-1½ 515 (600-1½)		NA		
CIRCLING	480-1 455 (500-1)		540-1½ 515 (600-1½)		NA				

SE-2, 22 OCT 2009 to 19 NOV 2009

SE-2, 22 OCT 2009 to 19 NOV 2009