

# GPS RWY 28

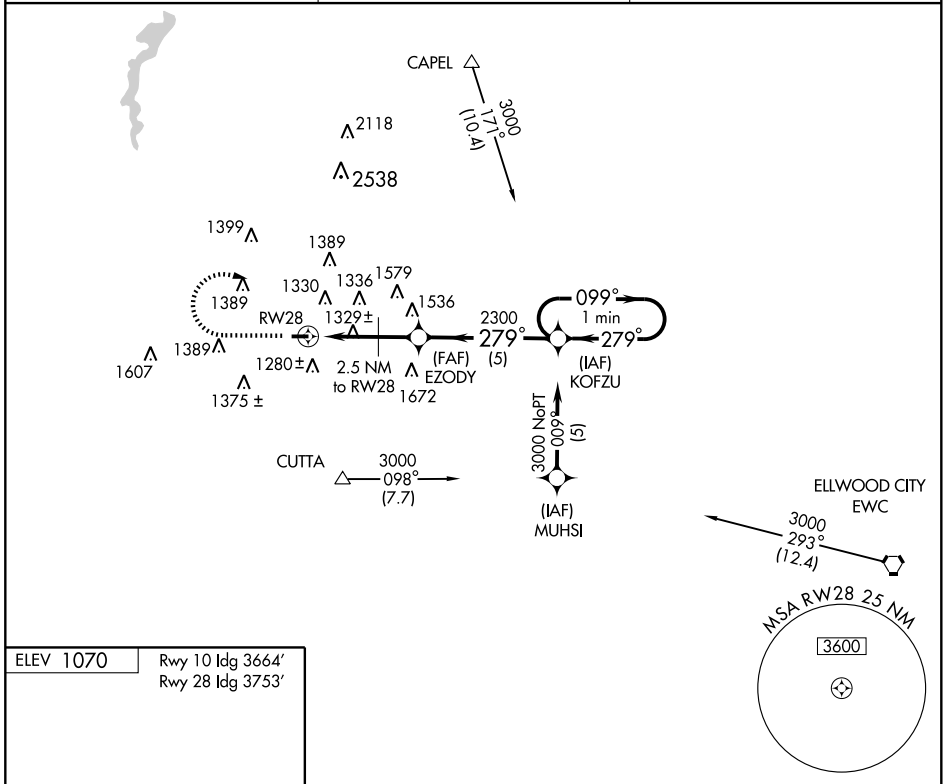
YOUNGSTOWN ELSEMER METRO (4G4)

APP CRS <b>279°</b>	Rwy Idg <b>3753</b>
	TDZE <b>1063</b>
	Apt Elev <b>1070</b>

**▽** Obtain local altimeter setting on CTAF; when not received, use Youngstown-Warren Rgnl altimeter setting. **MISSED APPROACH:** Climb to 1800, then climbing right turn to 3000 direct KOFZU WP and hold.

**▲ NA**

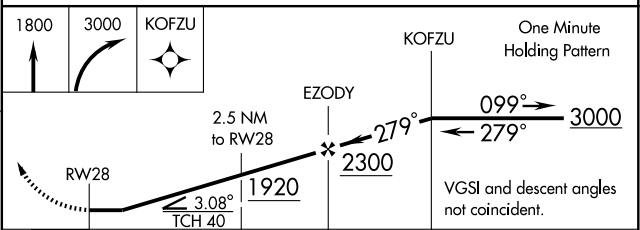
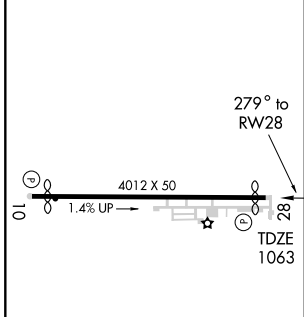
AKRON-CANTON APP CON * <b>125.5 371.875</b>	CLNC DEL <b>119.25</b>	UNICOM <b>123.05</b> (CTAF)
--	---------------------------	--------------------------------



EC-2, 22 OCT 2009 to 19 NOV 2009

EC-2, 22 OCT 2009 to 19 NOV 2009

ELEV 1070	Rwy 10 Idg 3664'
	Rwy 28 Idg 3753'



CATEGORY	A	B	C	D
S-28	1600-1	537 (600-1)		NA
CIRCLING	1640-1	570 (600-1)		NA
YOUNGSTOWN-WARREN RGNL ALTIMETER SETTING MINIMUMS				
S-28	1660-1	597 (600-1)		NA
CIRCLING	1700-1	630 (700-1)		NA

MIRL Rwy 10-28  
REIL Rwy 10 and 28  
YOUNGSTOWN, OHIO  
Orig-B 08157

40°58'N-80°41'W

YOUNGSTOWN ELSEMER METRO (4G4)  
**GPS RWY 28**