

# GPS RWY 10

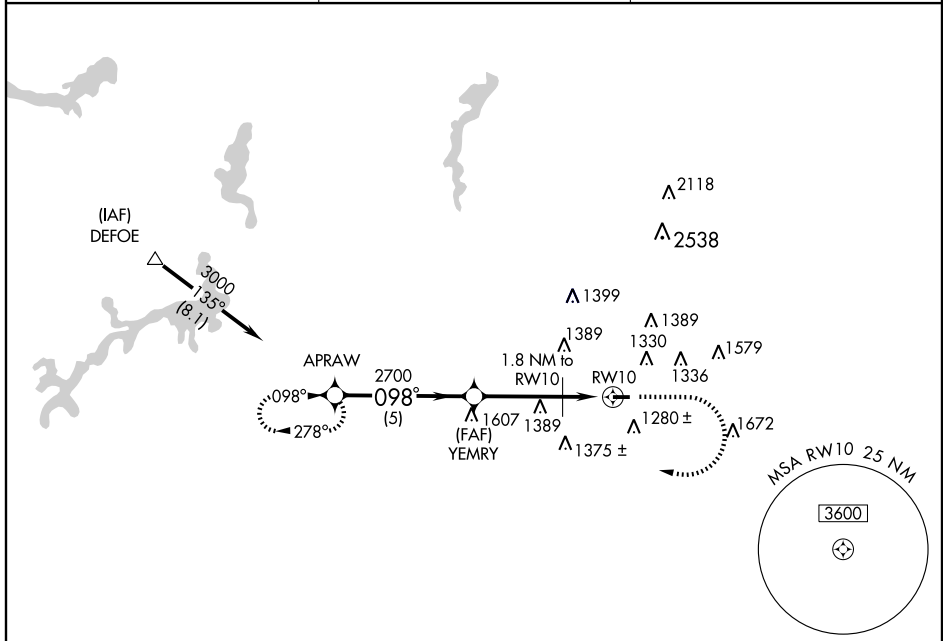
YOUNGSTOWN ELSER METRO (4G4)

APP CRS <b>098°</b>	Rwy Idg <b>3664</b> TDZE <b>1051</b> Apt Elev <b>1070</b>
------------------------	---

**▽** Obtain local altimeter setting on CTAF; when not received, use Youngstown-Warren Rgnl altimeter setting.

**▲ NA** MISSED APPROACH: Climb to 2000, then climbing right turn to 3000 direct APRAW WP and hold.

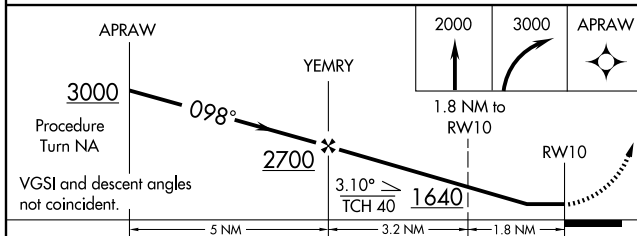
AKRON-CANTON APP CON * <b>125.5 371.875</b>	CLNC DEL <b>119.25</b>	UNICOM <b>123.05</b> (CTAF)
--	---------------------------	--------------------------------



EC-2, 22 OCT 2009 to 19 NOV 2009

EC-2, 22 OCT 2009 to 19 NOV 2009

ELEV 1070	Rwy 10 Idg 3664' Rwy 28 Idg 3753'
-----------	--------------------------------------



CATEGORY	A	B	C	D
S-10	1540 - 1	489 (500-1)		NA
CIRCLING	1640 - 1	570 (600-1)		NA
YOUNGSTOWN-WARREN RGNL ALTIMETER SETTING MINIMUMS				
S-10	1600 - 1	549 (600-1)		NA
CIRCLING	1700 - 1	630 (700-1)		NA

MIRL Rwy 10-28  
REL. Rwy 10 and 28