

RNAV (GPS) RWY 34

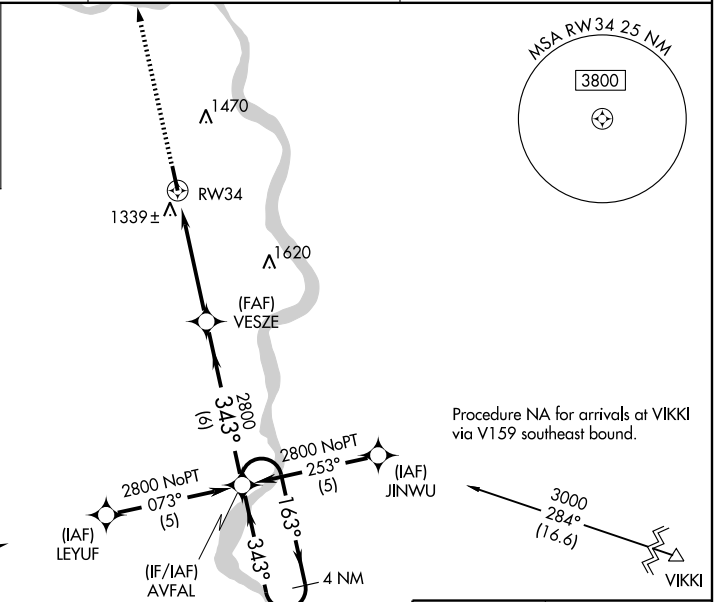
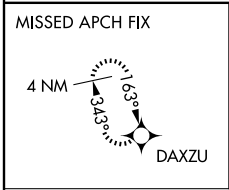
PLATTSMOUTH MUNI (PMV)

WAAS CH 40200 W34A	APP CRS 343°	Rwy Idg TDZE Apt Elev	5500 1204 1204
--	------------------------	-----------------------------	---

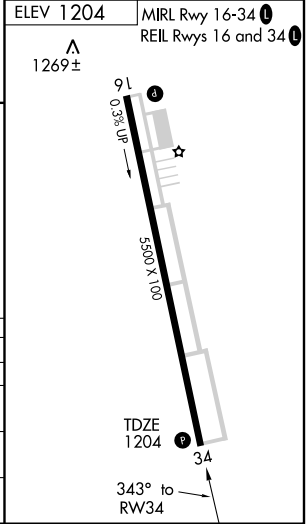
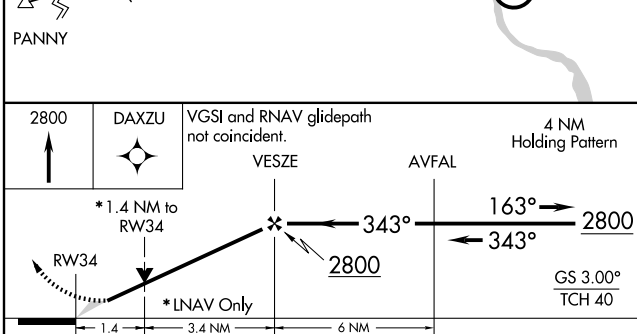
⚠ When local altimeter setting not received, use Offutt AFB altimeter setting, and increase all DAs 45 feet and all MDAs 60 feet, increase LNAV/VNAV all Cats visibility ¼ mile. VDP NA when using Offutt AFB altimeter setting. Baro-VNAV NA when using Offutt AFB altimeter setting. For uncompensated Baro-VNAV systems, LNAV/VNAV NA below -17°C (2°F) or above 54°C (130°F). DME/DME RNP-0.3 NA.

MISSED APPROACH:
Climb to 2800
direct DAXZU and hold.

AWOS-3 118.975	OMAHA APP CON 120.1 354.05	UNICOM 122.7 (CTAF) Ⓛ
--------------------------	--------------------------------------	--



Procedure NA for arrivals at VIKKI via V159 southeast bound.



CATEGORY	A	B	C	D
LPV DA	1454-1	250 (300-1)		NA
LNAV/VNAV DA	1656-1½	452 (500-1½)		NA
LNAV MDA	1680-1	476 (500-1)		NA
CIRCLING	1680-1	476 (500-1)		NA

NC-2, 22 OCT 2009 to 19 NOV 2009

NC-2, 22 OCT 2009 to 19 NOV 2009