

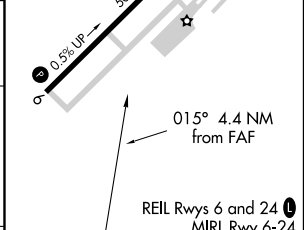
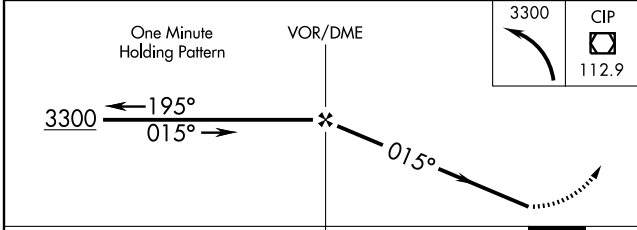
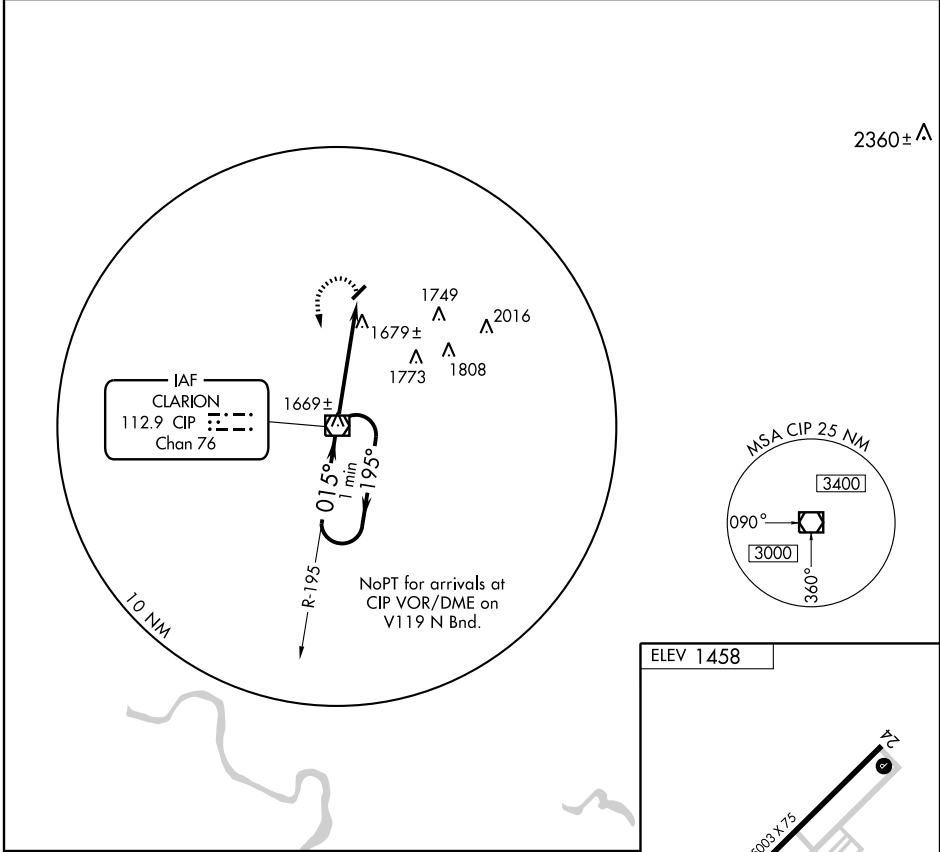
VOR-A
CLARION COUNTY (A.X.Q)

VOR/DME CIP 112.9 Chan 76	APP CRS 015°	Rwy Idg TDZE Apt Elev 1458	N/A N/A 1458
---	------------------------	---	---

When local altimeter setting not received, use Dubois altimeter setting and increase all MDAs 120 feet and Cat A visibility 1/4 mile, Cats C/D visibility 1/2 mile.

MISSED APPROACH: Climbing left turn to 3300 direct CIP VOR/DME and hold.

AWOS-3 118.275	CLEVELAND CENTER 126.72 291.65	UNICOM 122.8 (CTAF) 0
--------------------------	--	---------------------------------



CATEGORY	A	B	C	D	FAF to MAP 4.4 NM					
CIRCLING	2220-1 762 (800-1)	2220-1 1/4 762 (800-1 1/4)	2220-2 1/4 762 (800-2 1/4)	2220-2 1/2 762 (800-2 1/2)	Knots	60	90	120	150	180
					Min:Sec	4:24	2:56	2:12	1:46	1:28

NE-4, 22 OCT 2009 to 19 NOV 2009

NE-4, 22 OCT 2009 to 19 NOV 2009