

CLARION, PENNSYLVANIA

AL-6527 (FAA)

# RNAV (GPS) RWY 24

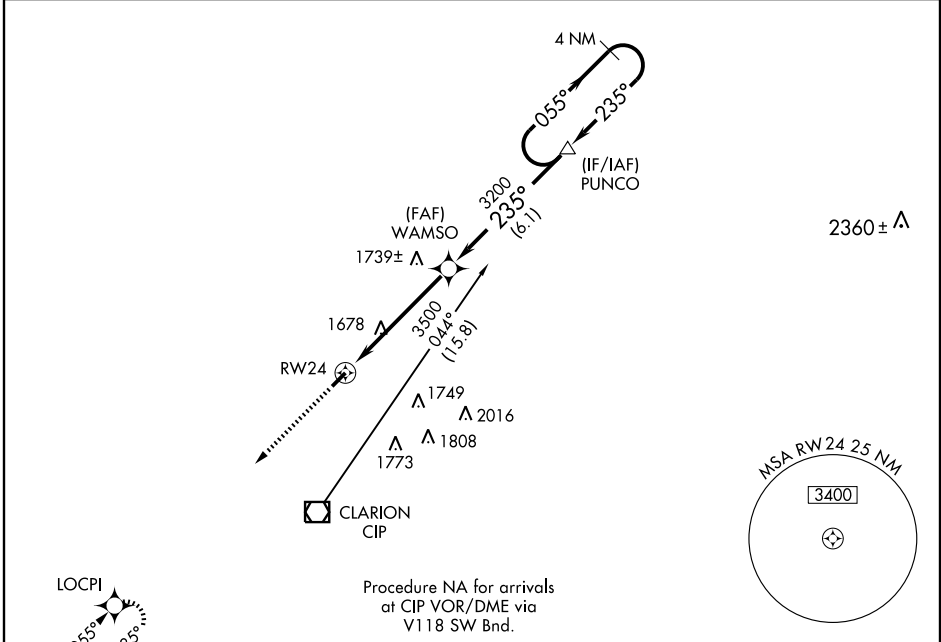
CLARION COUNTY (AXQ)

APP CRS	Rwy Idg	<b>5003</b>
<b>235°</b>	TDZE	<b>1458</b>
	Apt Elev	<b>1458</b>

**NA** DME/DME RNP-0.3 NA. Visibility reduction by helicopters NA. When local altimeter setting not received, use Dubois altimeter setting and increase all MDAs 120 ft and LNAV/Circling Cat C and D visibility ¼ mile.

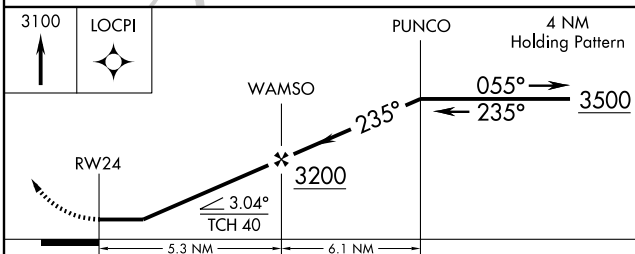
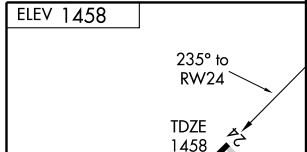
MISSED APPROACH: Climb to 3100 direct LOCPI and hold.

AWOS-3 <b>118.275</b>	CLEVELAND CENTER <b>126.72 291.65</b>	UNICOM <b>122.8 (CTAF) 0</b>
--------------------------	--	---------------------------------

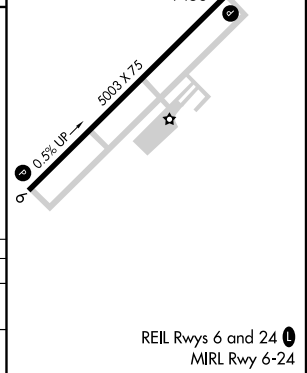


NE-4, 22 OCT 2009 to 19 NOV 2009

NE-4, 22 OCT 2009 to 19 NOV 2009



CATEGORY	A	B	C	D
LNAV MDA	1940-1 482 (500-1)		1940-1½ 482 (500-1½)	1940-1½ 482 (500-1½)
CIRCLING	1980-1 522 (600-1)		1980-1½ 522 (600-1½)	2060-2 602 (700-2)



CLARION, PENNSYLVANIA  
Amdt 1 08101

41°14'N - 79°26'W

# CLARION COUNTY (AXQ)

## RNAV (GPS) RWY 24