

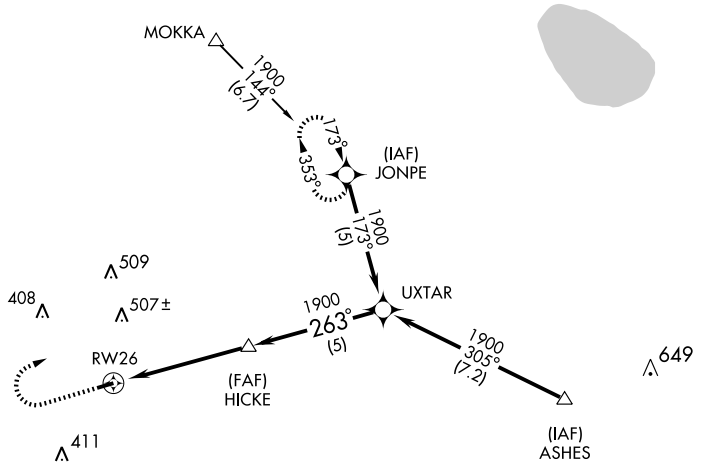
GPS RWY 26

LORIS/ TWIN CITY (5J9)

APP CRS 263°	Rwy ldg 3501
	TDZE 99
	Apt Elev 99

▲ NA Use Myrtle Beach Intl altimeter setting.	MISSED APPROACH: Climb to 1000 then climbing right turn to 1700 direct JONPE WP and hold.
--	---

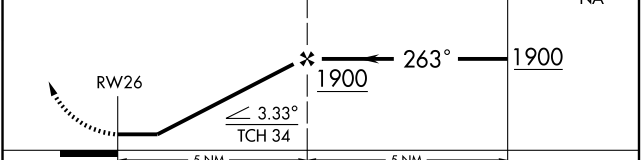
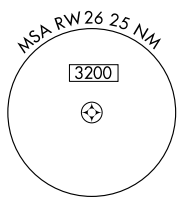
MYRTLE BEACH APP CON ★ 119.2 350.3	CTAF 122.9
--	----------------------



SE-2, 22 OCT 2009 to 19 NOV 2009

SE-2, 22 OCT 2009 to 19 NOV 2009

ELEV	99	Rwy 8 ldg	3494'
------	----	-----------	-------



CATEGORY	A	B	C	D
S-26	540-1	441 (500-1)	NA	
CIRCLING	600-1	501 (600-1)	NA	