

ANDALUSIA/OPP, ALABAMA

AL-6524 (FAA)

RNAV (GPS) RWY 11

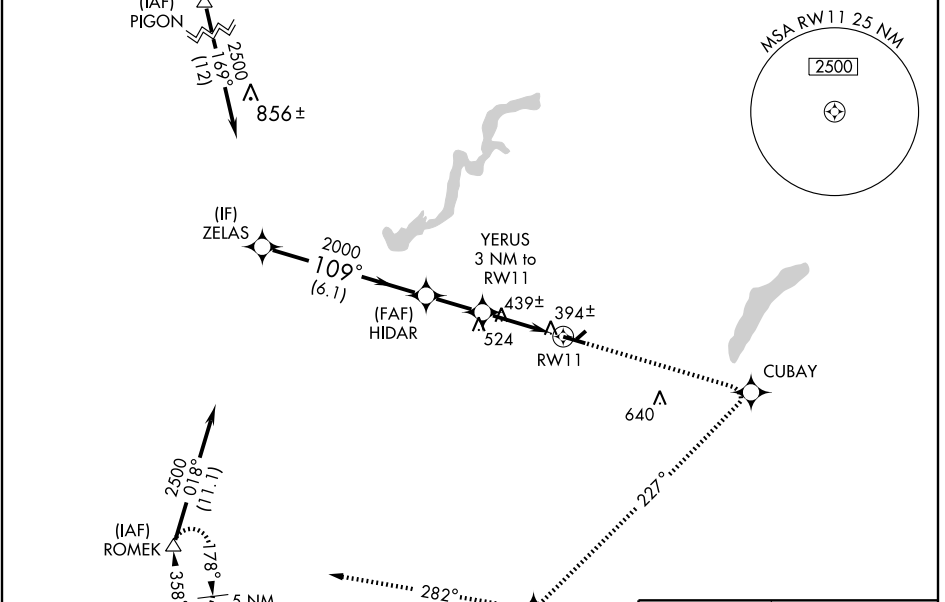
WAAS CH 82600 W11A	APP CRS 109°	Rwy ldg TDZE Apt Elev	5001 310 310
---------------------------------	------------------------	-----------------------------	---

ANDALUSIA/OPP/
SOUTH ALABAMA RGNL AT BILL BENTON FIELD (79J)

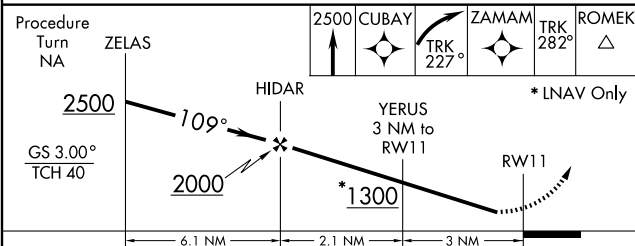
NA
DME/DME RNP-0.3 NA. For uncompensated Baro-VNAV systems, LNAV/VNAV NA below -15°C (5°F) or above 48°C (119°F). If local altimeter setting not received, use Cairns AAF altimeter setting and increase LPV DA to 697 feet, LNAV/VNAV DA to 737 feet, and all MDAs 100 feet. Baro-VNAV NA when using Cairns AAF altimeter setting. Visibility reduction by helicopters NA.

MISSED APPROACH: Climb to 2500 direct CUBAY and right turn via 227° track to ZAMAM and 282° track to ROMEK and hold.

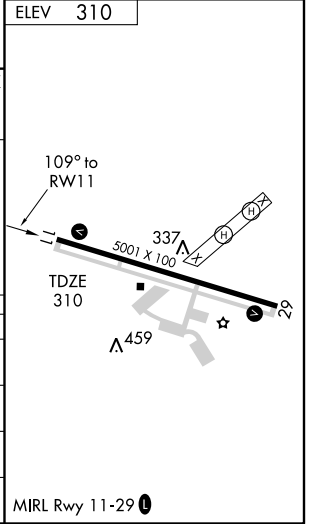
ASOS 134.875	CAIRNS APP CON ★ 133.45 239.4	ANDALUSIA-OPP TOWER ★ 119.55 (CTAF) 317.75	GND CON 121.9 273.45	UNICOM 122.8
------------------------	---	--	--------------------------------	------------------------



ELEV 310



CATEGORY	A	B	C	D
LPV DA	615-1 305 (400-1)			
LNAV/VNAV DA	655-1¼ 345 (400-1¼)			
LNAV MDA	760-1 450 (500-1)	760-1¼ 450 (500-1¼)	760-1½ 450 (500-1½)	760-1½ 450 (500-1½)
CIRCLING	780-1 470 (500-1)	780-1½ 470 (500-1½)	860-2 550 (600-2)	860-2 550 (600-2)



ANDALUSIA/OPP, ALABAMA
Amdt 1B 08045

ANDALUSIA/OPP/ SOUTH ALABAMA RGNL AT BILL BENTON FIELD (79J)
31° 19'N-86° 24'W

RNAV (GPS) RWY 11

SE-4, 22 OCT 2009 to 19 NOV 2009

SE-4, 22 OCT 2009 to 19 NOV 2009