

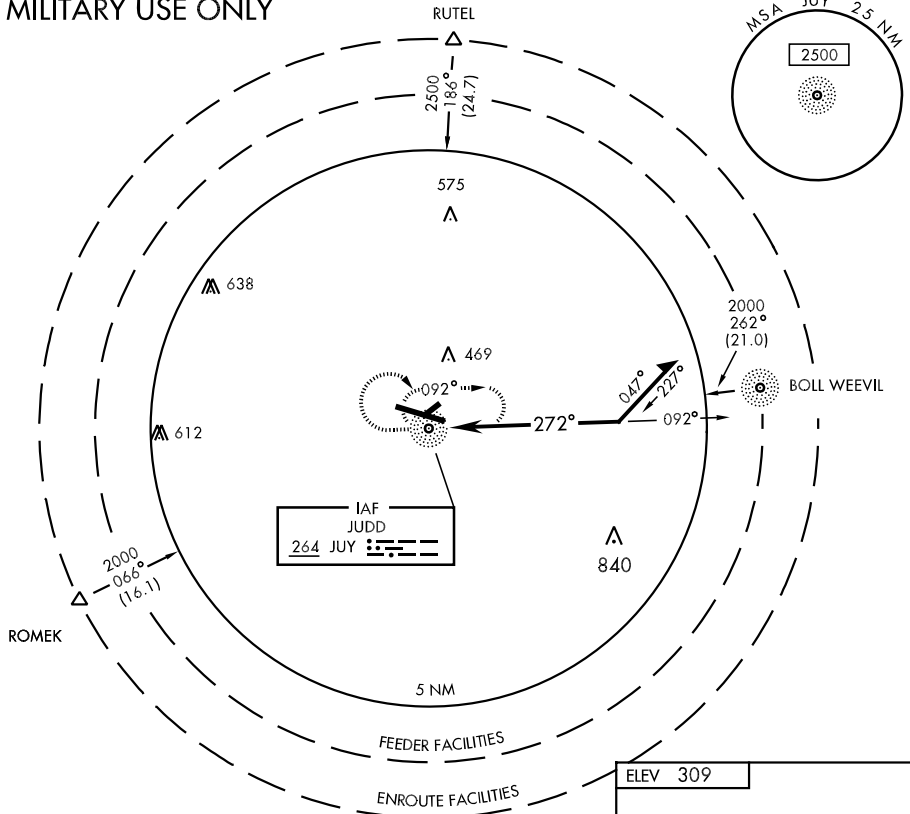
NDB JUY <b>264</b>	APCH CRS <b>272°</b>	Rwy Idg TDZE Arpt Elev <b>5001</b> <b>309</b> <b>309</b>	AL-6524 [USA] SOUTH ALABAMA RGNL AT BILL BENTON FLD (79J)
-----------------------	-------------------------	---	---

**NA** (When tower closed).  
 \* If local altimeter setting not received, use Cairns AAF altimeter setting and increase all MDAs 100 feet.

MISSED APPROACH: Climb to 1200, then climbing right turn to 2000 direct JUY NDB and hold.

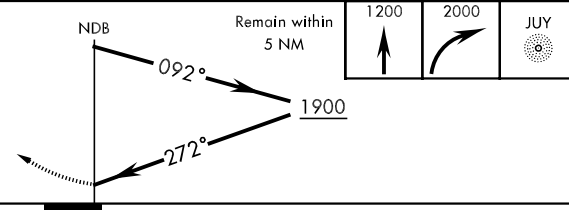
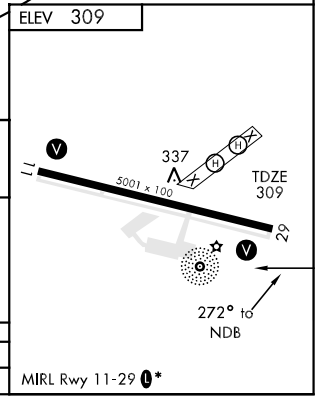
CAIRNS APP CON <b>133.45 239.4</b>	ANDALUSIA-OPP TOWER ★ <b>119.55 0*</b> (CTAF) <b>317.75</b>	GND CON <b>121.9 273.45</b>	UNICOM <b>122.8</b>
---------------------------------------	--	--------------------------------	------------------------

## MILITARY USE ONLY



SE-4, 22 OCT 2009 to 19 NOV 2009

SE-4, 22 OCT 2009 to 19 NOV 2009



CATEGORY	COPTER		
S-29 *	780-½	471	(500-½)

MIRL Rwy 11-29 0\*