

EMMETSBURG, IOWA

AL-6523 (FAA)

NDB or GPS RWY 31

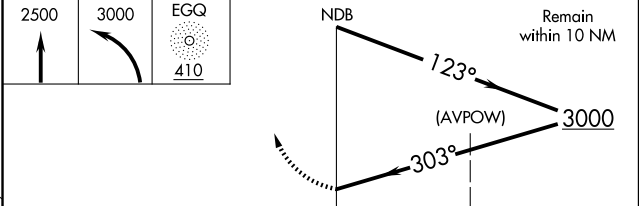
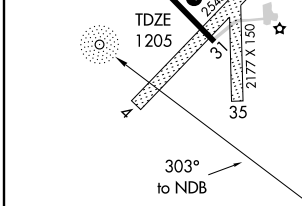
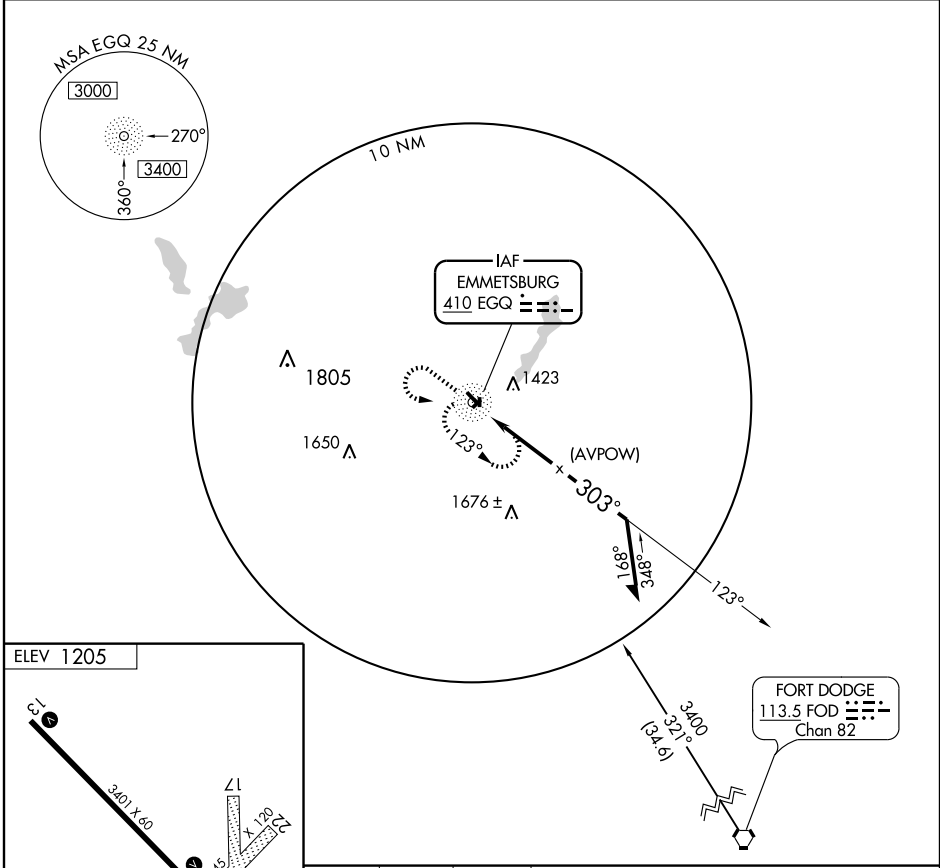
EMMETSBURG MUNI (EGQ)

NDB EGQ 410	APP CRS 303°	Rwy Idg TDZE Apt Elev	3401 1205 1205
-----------------------	------------------------	-----------------------------	---

▼ Use Algona altimeter setting.
 ▲ NA

MISSED APPROACH: Climb to 2500 then climbing left turn to 3000 direct EGQ NDB and hold.

ALGONA AWOS-3 118.475	MINNEAPOLIS CENTER 127.75 257.7	UNICOM 122.8 (CTAF) 0
---------------------------------	---	--



CATEGORY	A	B	C	D
S-13	1820-1	615 (700-1)		NA
CIRCLING	1820-1	615 (700-1)		NA

EMMETSBURG, IOWA
Amdt 2 09295

43°06'N-94°42'W

EMMETSBURG MUNI (EGQ) NDB or GPS RWY 31

NC-3, 22 OCT 2009 to 19 NOV 2009

NC-3, 22 OCT 2009 to 19 NOV 2009