

WAVERLY, TENNESSEE

AL-6522 (FAA)

NDB or GPS RWY 21

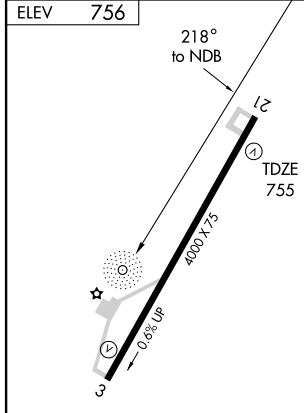
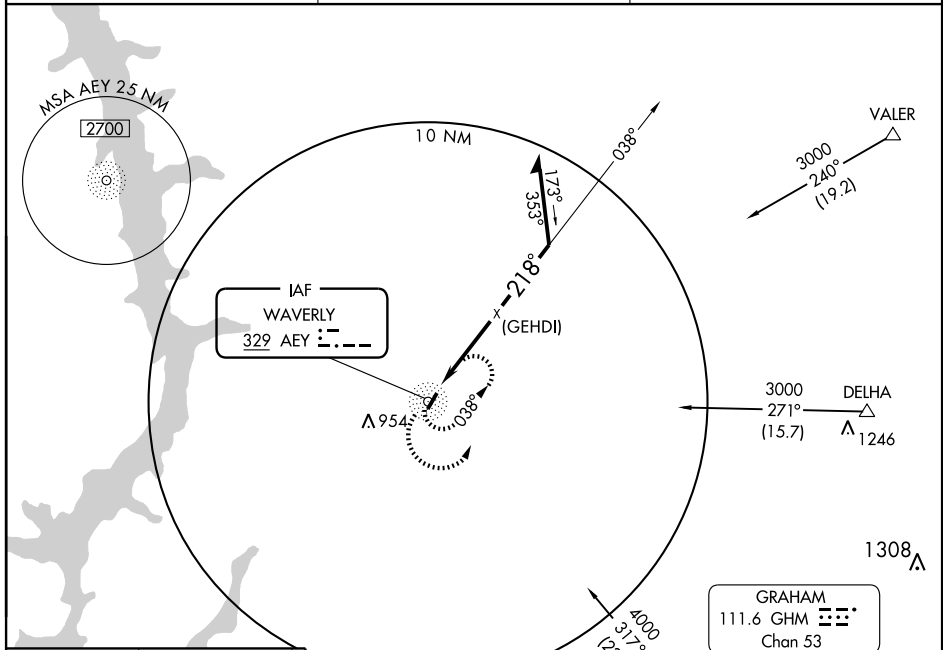
WAVERLY/HUMPHREYS COUNTY (ØM5)

NDB AEY 329	APP CRS 218°	Rwy Idg TDZE Apt Elev	4000 755 756
-----------------------	------------------------	-----------------------------	---

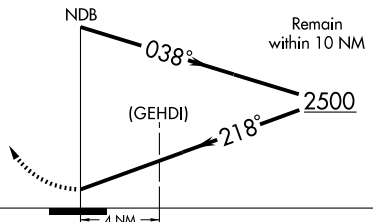
Obtain local altimeter on CTAF, when not received, use Nashville altimeter setting.

 MISSED APPROACH: Climb to 1800 then climbing left turn to 2500 direct AEY NDB and hold.

MEMPHIS CENTER 125.85 381.4	GCO 135.075	UNICOM 122.8 (CTAF)
---------------------------------------	-----------------------	-------------------------------



1800	2500	AEY 329
------	------	------------



CATEGORY	A	B	C	D
S-21	1320-1	565 (600-1)	1320-1½ 565 (600-1½)	1320-1¾ 565 (600-1¾)
CIRCLING	1320-1	564 (600-1)	1320-1½ 564 (600-1½)	1320-2 564 (600-2)
NASHVILLE ALTIMETER SETTING MINIMUMS				
S-21	1500-1 745 (800-1)	1500-1¼ 745 (800-1¼)	1500-2¼ 745 (800-2¼)	1500-2½ 745 (800-2½)
CIRCLING	1500-1 744 (800-1)	1500-1¼ 744 (800-1¼)	1500-2¼ 744 (800-2¼)	1500-2½ 744 (800-2½)

MIRL Rwy 3-21					
Knots	60	90	120	150	180
Min:Sec					

WAVERLY, TENNESSEE
Amdt 3A 08101

36°07'N-87°44'W

WAVERLY/HUMPHREYS COUNTY (ØM5) NDB or GPS RWY 21

SE-1, 22 OCT 2009 to 19 NOV 2009

SE-1, 22 OCT 2009 to 19 NOV 2009