

# NDB RWY 14

CAMBRIDGE MUNI (CSB)

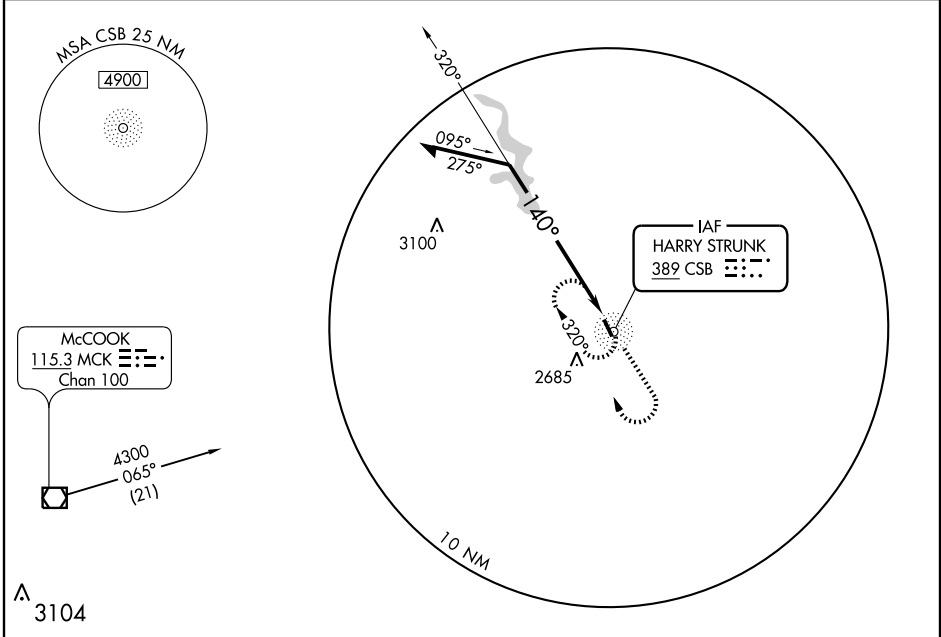
NDB CSB <b>389</b>	APP CRS <b>140°</b>	Rwy Idg TDZE Apt Elev	<b>4098</b> <b>2414</b> <b>2414</b>
-----------------------	------------------------	-----------------------------	---

**▲ NA** Use McCook altimeter setting.

MISSED APPROACH: Climb to 4300 then right turn direct CSB NDB and hold.

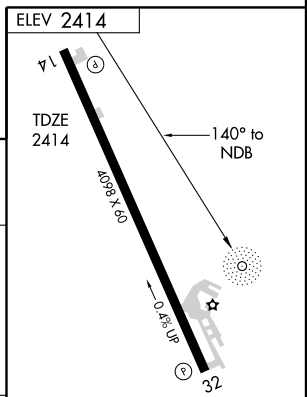
DENVER CENTER  
**132.7 397.85**

UNICOM  
**122.8 (CTAF) 0**



NC-2, 22 OCT 2009 to 19 NOV 2009

NC-2, 22 OCT 2009 to 19 NOV 2009



Remain within 10 NM	NDB	4300	CSB 389
320°	140°	↑	↷

CATEGORY	A	B	C	D
S-14	3180-1 766 (800-1)	3180-1¼ 766 (800-1¼)	NA	
CIRCLING	3180-1 766 (800-1)	3180-1¼ 766 (800-1¼)	NA	

MIRL Rwy 14-32 0

Knots	60	90	120	150	180
Min:Sec					