

RNAV (GPS) RWY 31

WARROD INTL MEMORIAL (R.R.T)

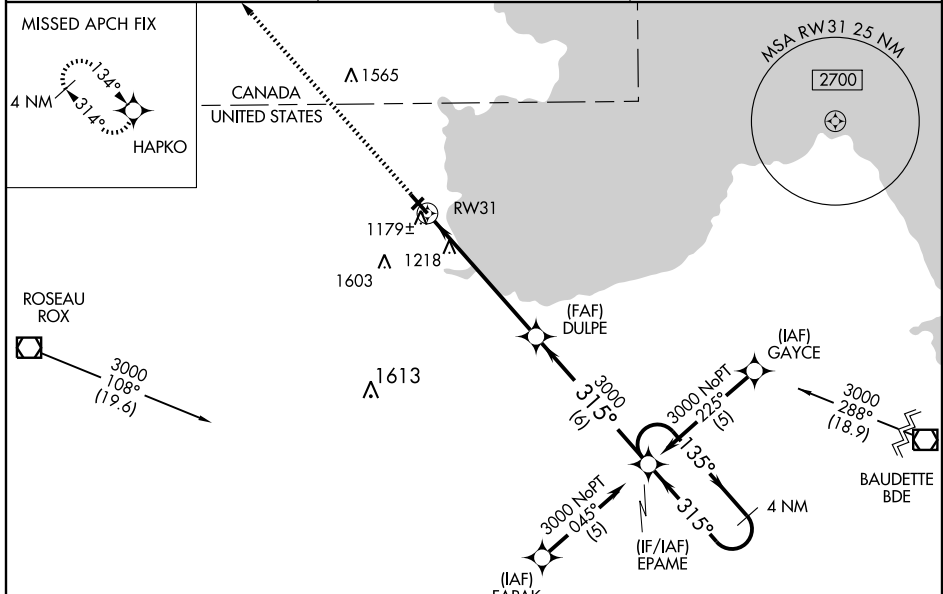
WAAS CH 42706 W31A	APP CRS 315°	Rwy Idg TDZE 1074 Apt Elev 1074
--	------------------------	---

⚠ Baro-VNAV NA when using Roseau altimeter setting. DME/DME RNP-0.3 NA. When local altimeter setting not received, use Roseau altimeter setting and increase all DAs 36 feet and all MDAs 40 feet and increase, LNAV/VNAV all Cats and LNAV Cat D visibilities ¼ mile. VDP NA when using Roseau altimeter setting. For unpowered MALSR when using Roseau altimeter setting increase LPV all Cats visibility to 1 mile. For uncompensated Baro-VNAV systems, LNAV-VNAV NA below -17°C (2°F) or above 47°C (116°F).



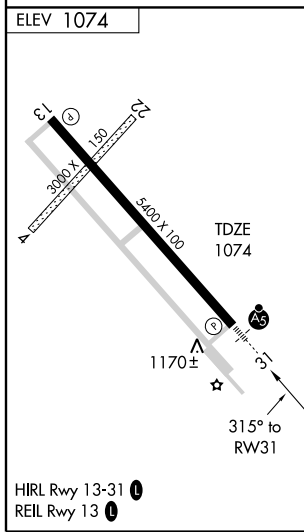
MISSED APPROACH: Climb to 3000 direct HAPKO and hold.

AWOS-3 119.925	MINNEAPOLIS CENTER 134.75 251.1	UNICOM 123.05 (CTAF) 0
--------------------------	---	---

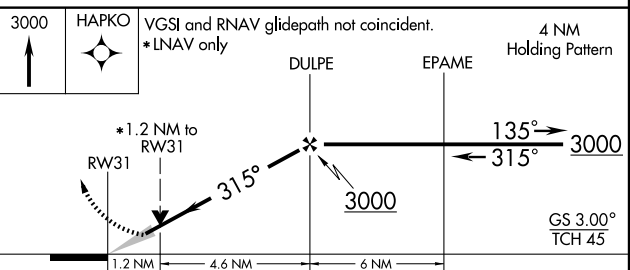


NC-1, 22 OCT 2009 to 19 NOV 2009

NC-1, 22 OCT 2009 to 19 NOV 2009



Procedure: NA for arrivals at ROX VOR/DME via V175 northbound and arrivals at BDE VOR/DME via V217 southeast bound.



CATEGORY	A	B	C	D
LPV DA		1324-1/2	250 (300-1/2)	
LNAV/VNAV DA		1449-3/4	375 (400-3/4)	
LNAV MDA	1480-1/2	406 (500-1/2)	1480-3/4 406 (500-3/4)	1480-1 406 (500-1)
CIRCLING	1500-1 426 (500-1)	1540-1 466 (500-1)	1540-1/2 466 (500-1/2)	1640-2 566 (600-2)