

HETTINGER, NORTH DAKOTA

AL-6517 (FAA)

# GPS RWY 30 HETTINGER MUNI (HEI)

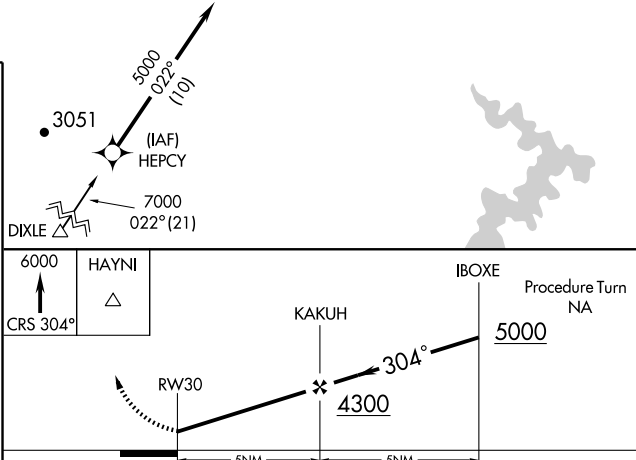
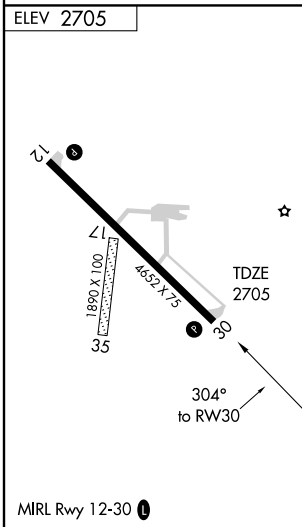
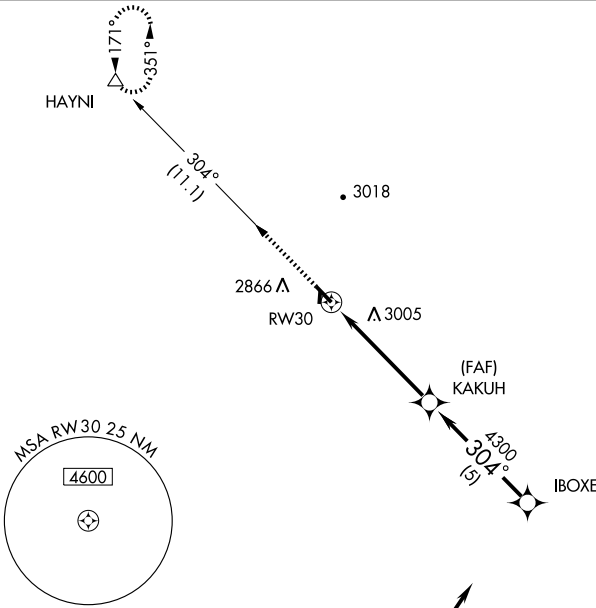
APP CRS <b>304°</b>	Rwy Idg <b>4652</b>
	TDZE <b>2705</b>
	Apt Elev <b>2705</b>

MISSED APPROACH: Climb to 6000 via 304° course to HAYNI WP and hold.

ASOS <b>119.925</b>	MINNEAPOLIS CENTER <b>124.25 380.3</b>	UNICOM <b>122.8 (CTAF)</b>
------------------------	---	-------------------------------

NC-1, 22 OCT 2009 to 19 NOV 2009

NC-1, 22 OCT 2009 to 19 NOV 2009



CATEGORY	A	B	C	D
S-30	3320-1	615 (700-1)	3320-1¾ 615 (700-1¾)	3320-2 615 (700-2)
CIRCLING	3320-1	615 (700-1)	3320-1¾ 615 (700-1¾)	3400-2¼ 695 (700-2¼)

HETTINGER, NORTH DAKOTA  
Amdt 1 07018

46°01'N-102°39'W

# HETTINGER MUNI (HEI) GPS RWY 30