

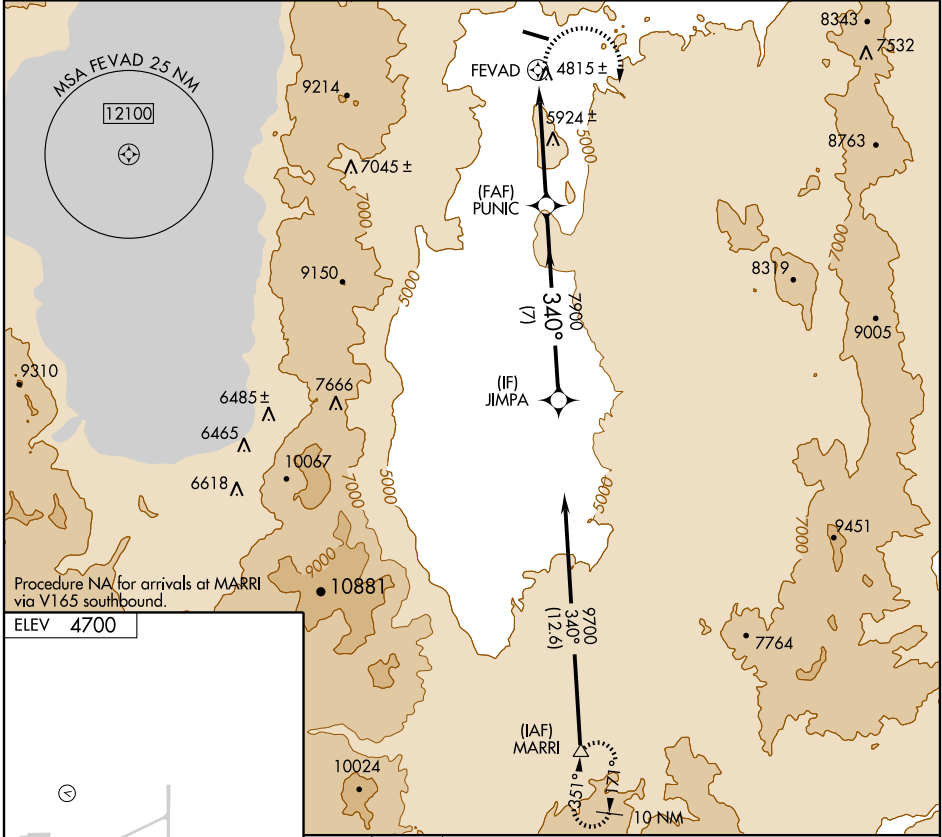
# RNAV (GPS)-A CARSON (CXP)

APP CRS <b>340°</b>	Rwy Idg TDZE Apt Elev	<b>N/A</b> <b>N/A</b> <b>4700</b>
------------------------	-----------------------------	---

**⚠** When local altimeter setting not received, use Reno/Tahoe Intl altimeter setting and increase all MDAs 100 feet.  
**⚠** Procedure NA at night.  
 DME/DME RNP-0.3 NA.

**MISSED APPROACH:** Climbing right turn to 13000 direct MARRI and hold, continue climb-in-hold to 13000.

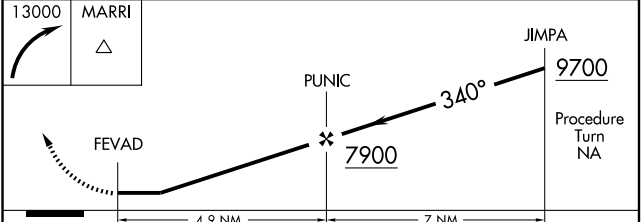
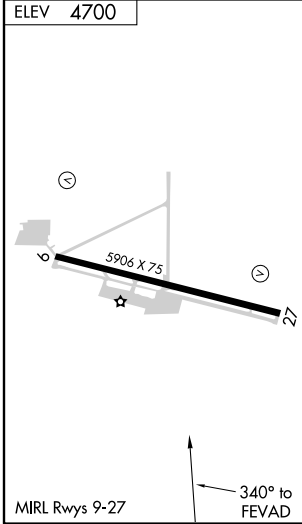
AWOS-3 <b>119.925</b>	RENO APP CON <b>119.2 279.55</b>	UNICOM <b>123.0 (CTAF)</b>
--------------------------	-------------------------------------	-------------------------------



SW-4, 22 OCT 2009 to 19 NOV 2009

SW-4, 22 OCT 2009 to 19 NOV 2009

Procedure NA for arrivals at MARRI via V165 southbound.



CATEGORY	A	B	C	D
CIRCLING	6380-1½	1680 (1700-1½)	6380-3 1680 (1700-3)	6420-3 1720 (1800-3)