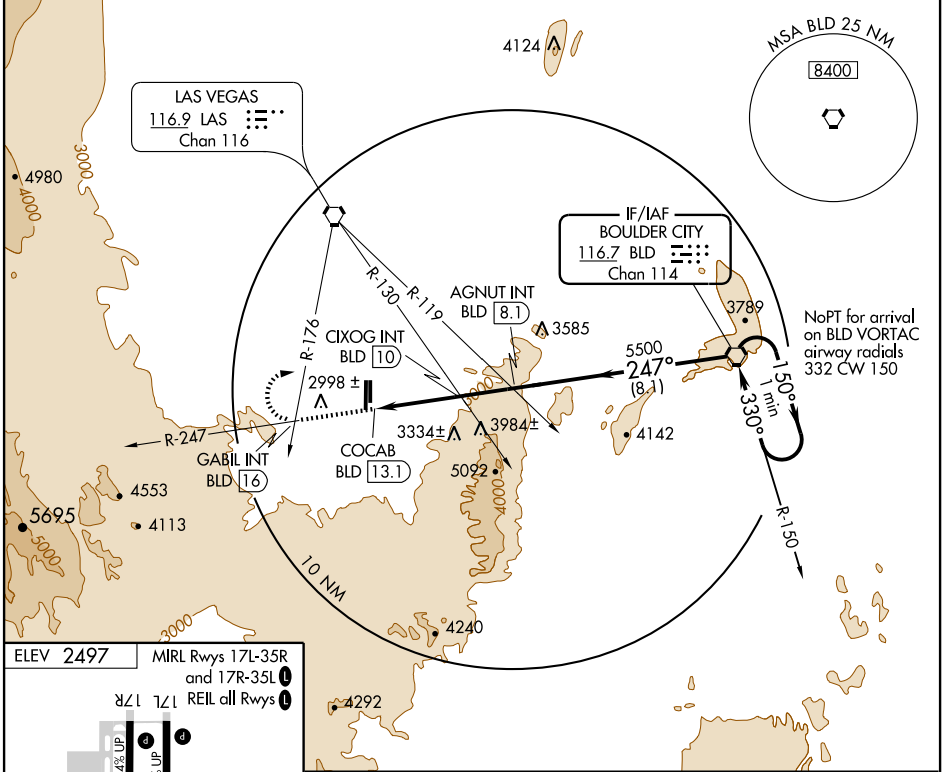


VORTAC BLD 116.7 Chan 114	APP CRS 247°	Rwy Idg TDZE Apt Elev 2497	N/A N/A 2497
---	------------------------	---	---------------------------

⚠ If local altimeter setting not received use McCarran Intl altimeter setting and increase all MDAs 60 feet. Circling to Rwy 35L and 35R NA at night.

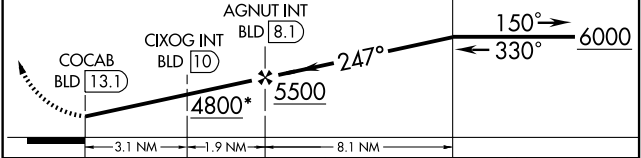
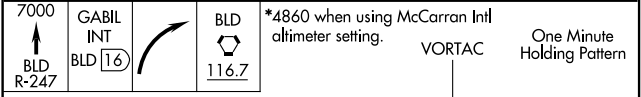
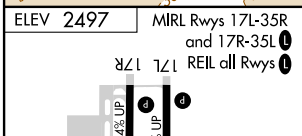
MISSED APPROACH: Climb to 7000 via BLD R-247 to GABIL Int/BLD 16 DME, and a right turn direct BLD VORTAC and hold.

ATIS 120.775	LAS VEGAS APP CON 118.4 307.25	HENDERSON TOWER* 125.1 (CTAF) 0	GND CON 127.8	UNICOM 122.95
------------------------	--	--	-------------------------	-------------------------



SW-4, 22 OCT 2009 to 19 NOV 2009

SW-4, 22 OCT 2009 to 19 NOV 2009



CATEGORY	A	B	C	D
CIRCLING	4800-1¼ 2303 (2400-1¼)	4800-1½ 2303 (2400-1½)	4800-3 2303 (2400-3)	NA
CIXOG FIX MINIMUMS (DUAL VOR RECEIVERS OR DME REQUIRED)				
CIRCLING	3620-1¼ 1123 (1200-1¼)	3620-1½ 1123 (1200-1½)	3620-3 1123 (1200-3)	NA

FAF to MAP 5 NM					
Knots	60	90	120	150	180
Min:Sec	5:00	3:20	2:30	2:00	1:40