

# ILS or LOC RWY 6R

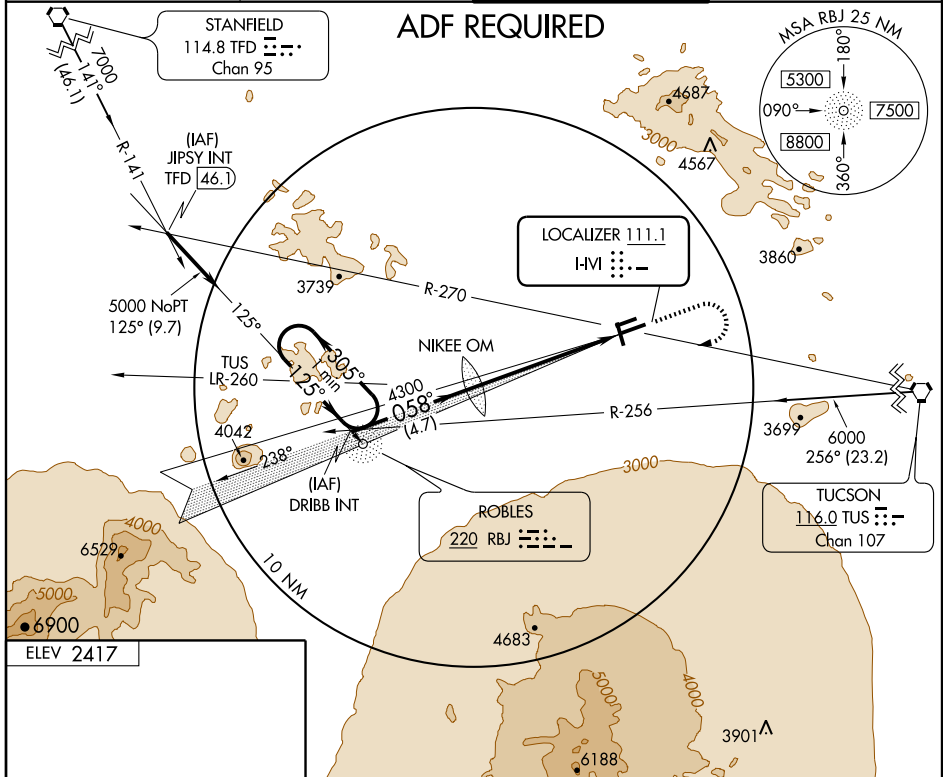
TUCSON/RYAN FIELD (RYN)

LOC I-IVI <b>111.1</b>	APP CRS <b>058°</b>	Rwy Idg TDZE Apt Elev	<b>5500</b> <b>2402</b> <b>2417</b>
---------------------------	------------------------	-----------------------------	---

**NA**

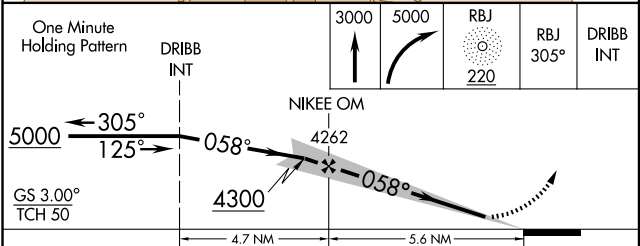
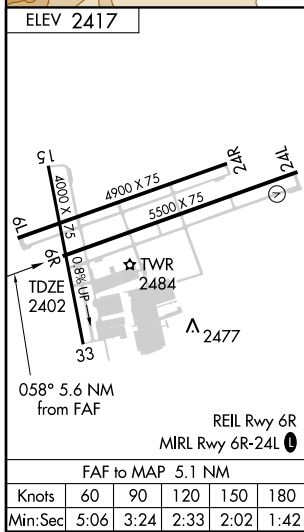
MISSED APPROACH: Climb to 3000, then climbing right turn to 5000 via direct RBJ NDB and 305° bearing RBJ to DRIBB Int and hold.

AWOS-3 <b>133.35</b>	TUCSON APP CON <b>128.5 395.9</b>	RYAN TOWER* <b>120.35 (ARR N)</b> <b>125.8 (CTAF)</b>	GND CON <b>118.2</b>
-------------------------	--------------------------------------	---	-------------------------



SW-4, 22 OCT 2009 to 19 NOV 2009

SW-4, 22 OCT 2009 to 19 NOV 2009



CATEGORY	A	B	C	D
S-ILS 6R	2652-1 250 (300-1)			
S-LOC 6R	2900-1 498 (500-1)	2900-1¼ 498 (500-1¼)	2900-1½ 498 (500-1½)	2900-1½ 498 (500-1½)
CIRCLING	2900-1 483 (500-1)	2900-1½ 483 (500-1½)	2980-2 563 (600-2)	