

RNAV (GPS) RWY 16

DAVIS/WOODLAND/WINTERS/ YOLO COUNTY (DWA)

APP CRS	Rwy Idg	6000
149°	TDZE	97
	Apt Elev	98

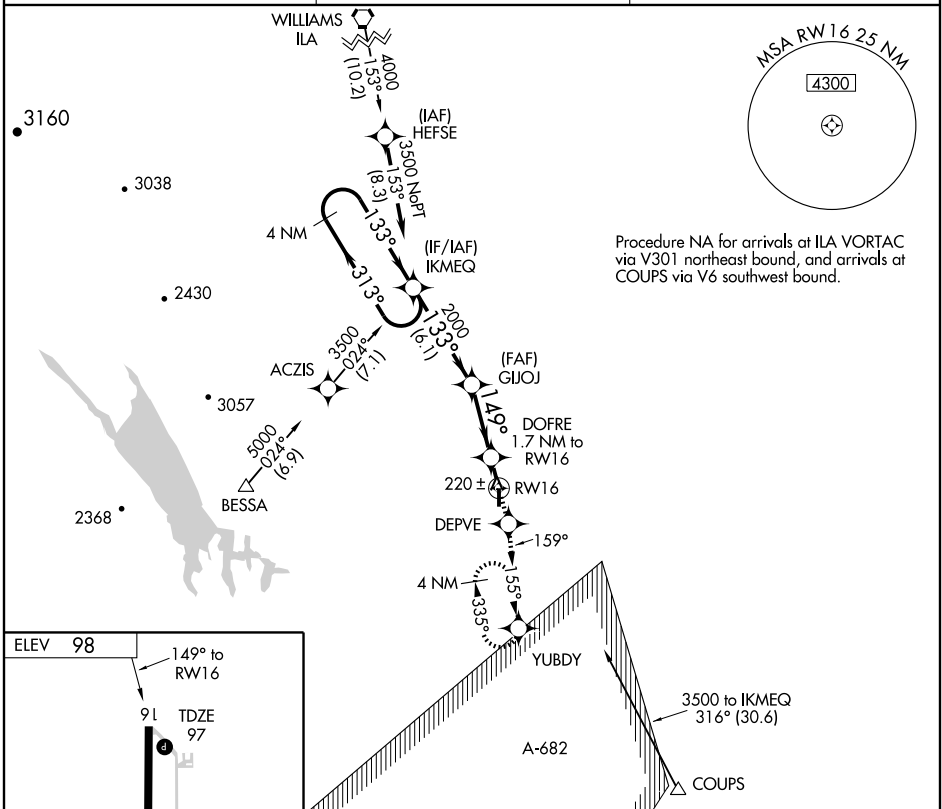
▼ DME/DME RNP-0.3 NA. Visibility reduction by helicopters NA.
▲ When local altimeter setting not received, use Travis AFB altimeter setting and increase all MDA 60 feet, and increase LNAV Cat C visibility ¼ mile.

MISSED APPROACH: Climb to 3300 direct DEPVE and via 159° track to YUBDY and hold, continue climb-in-hold to 3300.

AWOS-3
125.775

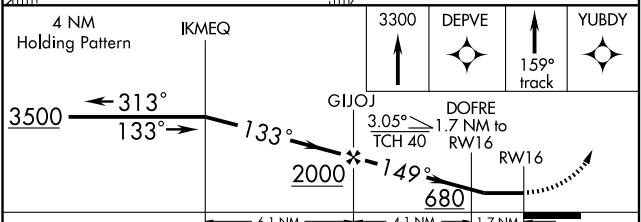
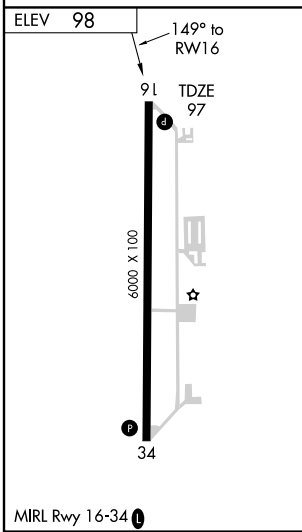
TRAVIS APP CON
126.6 291.0

UNICOM
123.0 (CTAF) 0



SW-2, 22 OCT 2009 to 19 NOV 2009

SW-2, 22 OCT 2009 to 19 NOV 2009



CATEGORY	A	B	C	D
LNAV MDA	540-1	443 (500-1)	540-1¼ 443 (500-1¼)	540-1½ 443 (500-1½)
CIRCLING	580-1	482 (500-1)	580-1½ 482 (500-1½)	660-2 562 (600-2)

RNAV (GPS) RWY 16