

SIoux CENTER, IOWA

AL-6511 (FAA)

NDB SOY 368	APP CRS 180°	Rwy Idg 3802
		TDZE 1448
		Apt Elev 1448

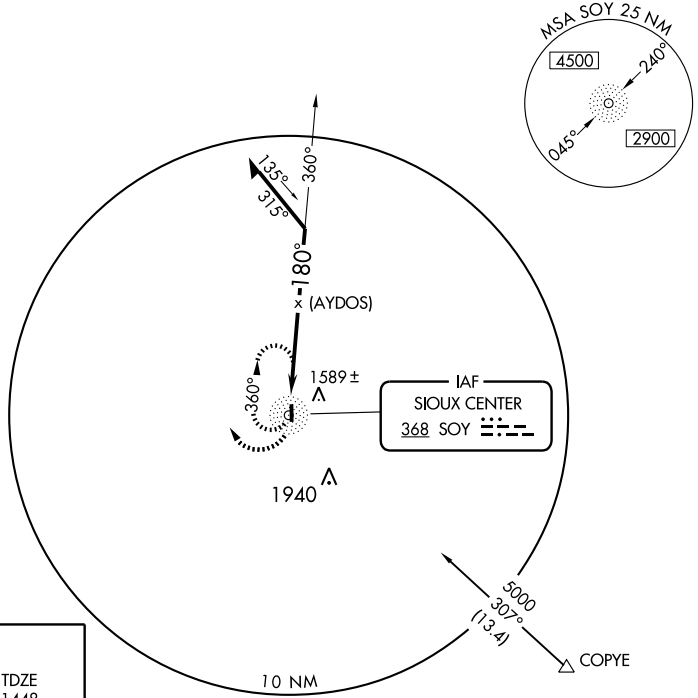
NDB or GPS RWY 18

SIoux CENTER MUNI (SOY)

⚠ Use Orange City altimeter setting; if not received use Sioux Falls altimeter setting and increase all MDAs 60 feet.

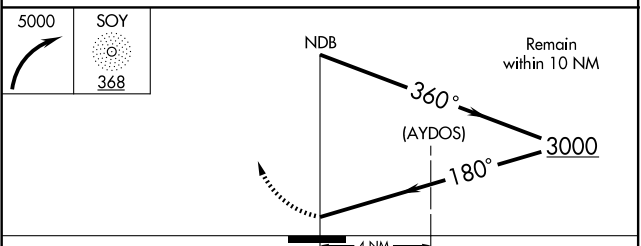
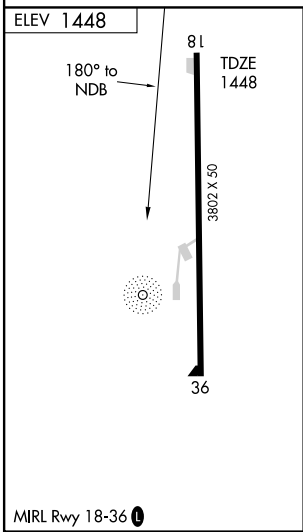
⚠ NA MISSED APPROACH: Climbing right turn to 5000 in SOY NDB holding pattern.

MINNEAPOLIS CENTER 124.1 269.0	UNICOM 122.8 (CTAF) 0
--	---------------------------------



NC-3, 22 OCT 2009 to 19 NOV 2009

NC-3, 22 OCT 2009 to 19 NOV 2009



CATEGORY	A	B	C	D
S-18	1980-1	532 (600-1)	1980-1½ 532 (600-1½)	NA
CIRCLING	1980-1	532 (600-1)	1980-1½ 532 (600-1½)	NA

SIoux CENTER, IOWA
Amdt 4A 09071

43°08'N-96°11'W

SIoux CENTER MUNI (SOY) NDB or GPS RWY 18