

NEILLSVILLE, WISCONSIN

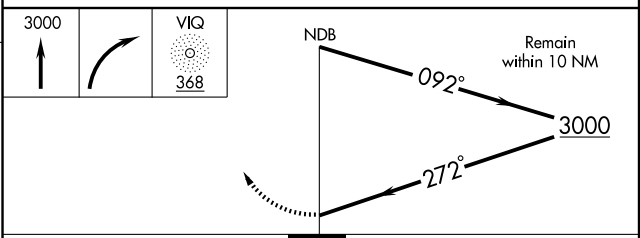
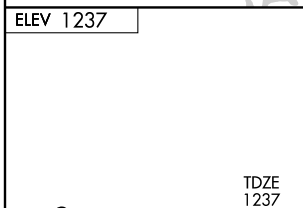
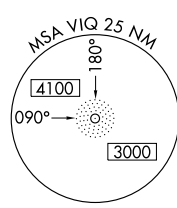
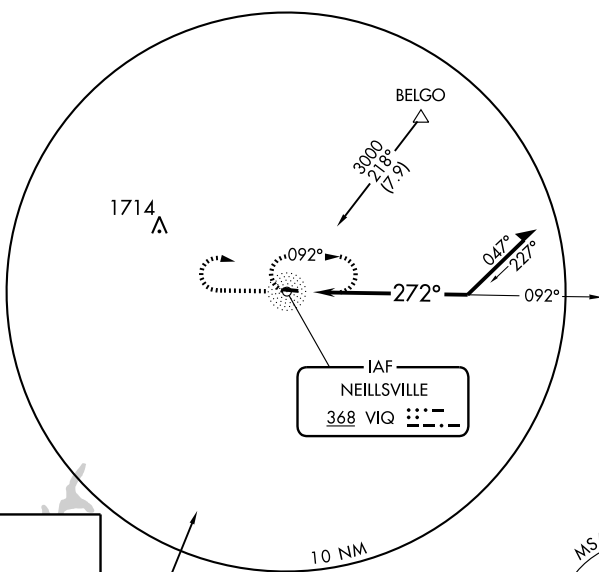
AL-6508 (FAA)

NDB RWY 27

NEILLSVILLE MUNI (VIQ)

NDB VIQ 368	APP CRS 272°	Rwy Idg TDZE Apt Elev	3400 1237 1237
-----------------------	------------------------	-----------------------------	---

<p>▲ NA Use Marshfield altimeter setting.</p>	<p>MISSED APPROACH: Climb to 3000 then right turn direct VIQ NDB and hold.</p>
<p>MINNEAPOLIS CENTER 124.4 317.7</p>	<p>UNICOM 122.8 (CTAF) 0</p>



CATEGORY	A	B	C	D
S-27	1840-1	603 (700-1)		NA
S-CIRCLING	1840-1	603 (700-1)		NA

NEILLSVILLE, WISCONSIN
Amdt 6 08325

44°33'N-90°31'W

NEILLSVILLE MUNI (VIQ)
NDB RWY 27

EC-3, 22 OCT 2009 to 19 NOV 2009

EC-3, 22 OCT 2009 to 19 NOV 2009