

# GPS RWY 27

NEILLSVILLE MUNI (VIQ)

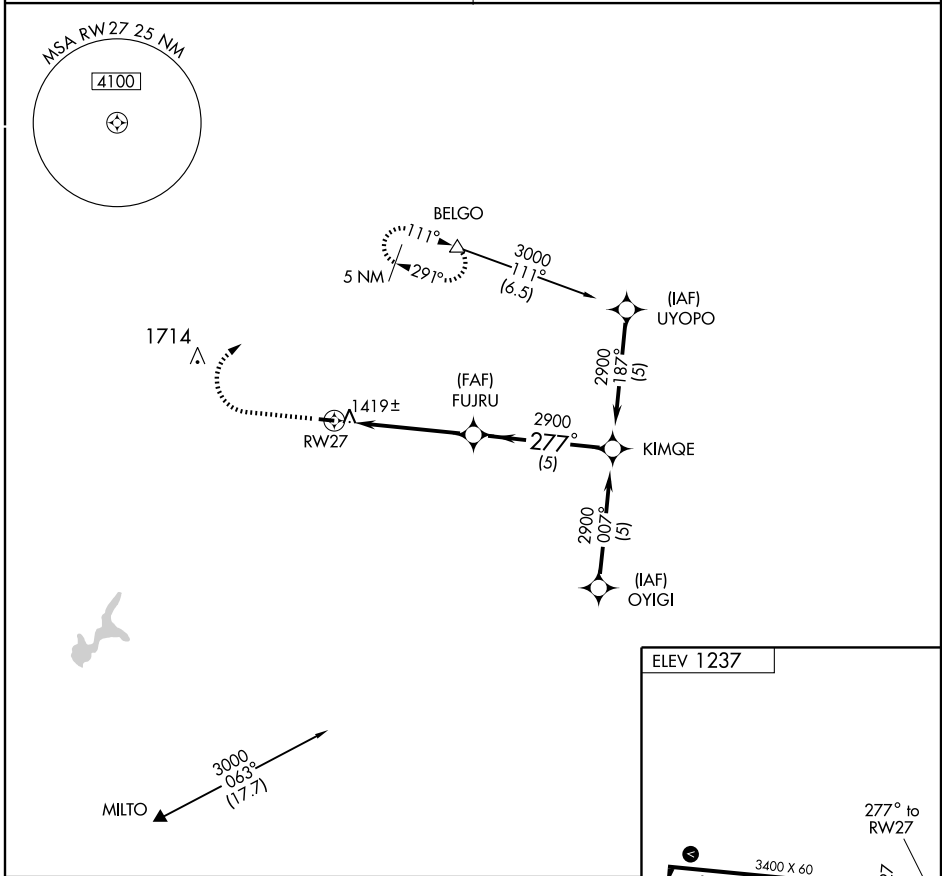
APP CRS	Rwy Idg	<b>3400</b>
<b>277°</b>	TDZE	<b>1237</b>
	Apt Elev	<b>1237</b>

**▲ NA** Use Marshfield altimeter setting.

MISSED APPROACH: Climb to 2200, then climbing right turn to 3000 direct BELGO WP and hold.

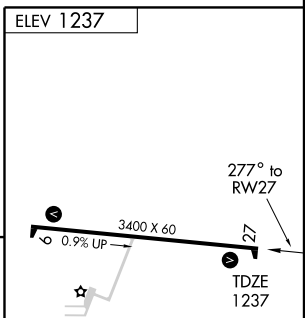
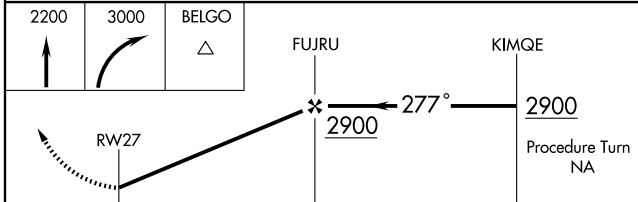
MINNEAPOLIS CENTER  
**124.4 317.7**

UNICOM  
**122.8 (CTAF) 0**



EC-3, 22 OCT 2009 to 19 NOV 2009

EC-3, 22 OCT 2009 to 19 NOV 2009



CATEGORY	A	B	C	D
S-27	1720-1	483 (500-1)		NA
CIRCLING	1760-1	523 (600-1)		NA

URL Rwy 9-27 0