

CLAYTON, ALABAMA

AL-6507 (FAA)

VOR/DME RWY 27

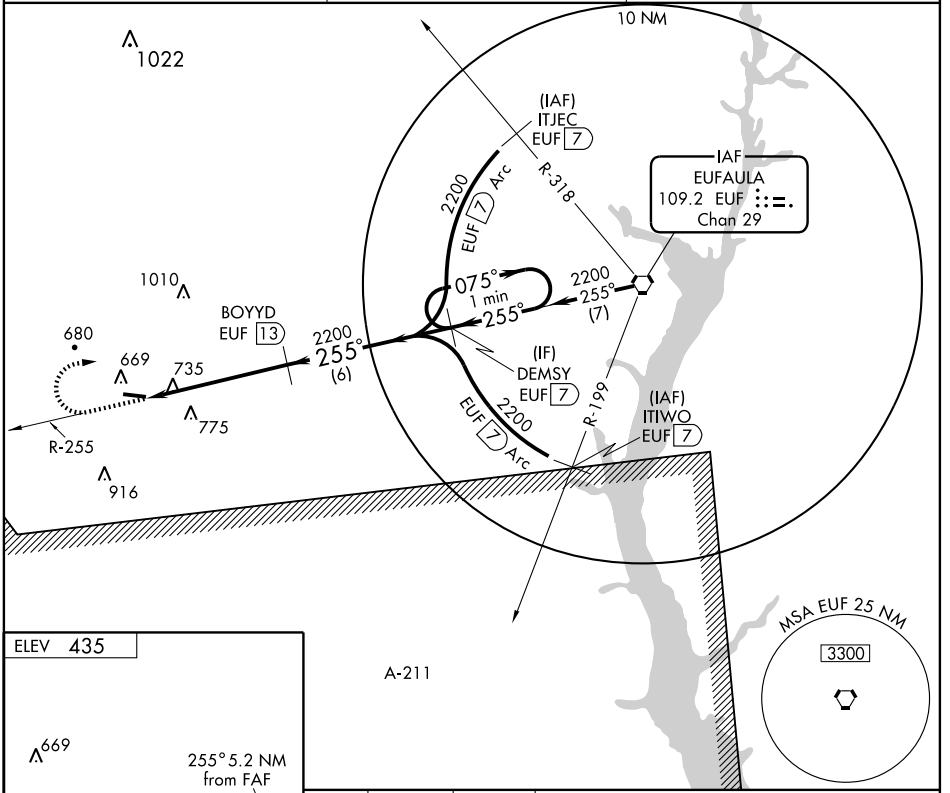
CLAYTON MUNI (11A)

VORTAC EUF	APP CRS	Rwy Idg	5010
109.2	255°	TDZE	435
Chan 29		Apt Elev	435

When local altimeter setting not received, use Dothan altimeter setting and increase all MDAs 100 feet, S-27 Cat C and D visibility ¼, circling Cat B visibility ¼ and Cat C and D ½. Visibility reduction by helicopters NA. Circling NA south of Runway 9/27.

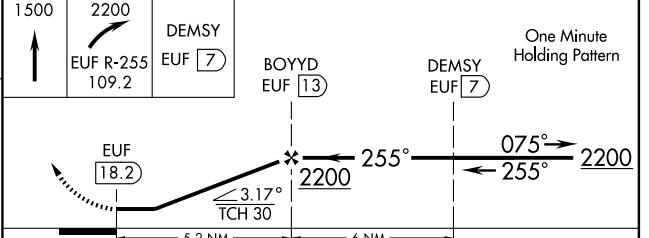
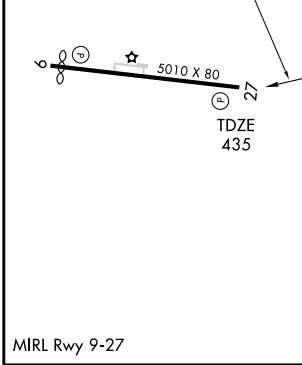
MISSED APPROACH: Climb to 1500 then climbing right turn to 2200 via EUF VORTAC R-255 to DEMSY/EUF 7 DME and hold.

AWOS-3 118.775	CAIRNS APP CON * 121.1 319.25	CTAF 122.9
--------------------------	---	----------------------



SE-4, 22 OCT 2009 to 19 NOV 2009

SE-4, 22 OCT 2009 to 19 NOV 2009



CATEGORY	A	B	C	D
S-27	1040-1	605 (700-1)	1040-1¾ 605 (700-1¾)	1040-2 605 (700-2)
CIRCLING	1100-1	665 (700-1)	1100-1¾ 665 (700-1¾)	1100-2 665 (700-2)

CLAYTON, ALABAMA
Amdt 2 09183

31° 53'N - 85° 29'W

VOR/DME RWY 27

CLAYTON MUNI (11A)