

RNAV (GPS) RWY 27

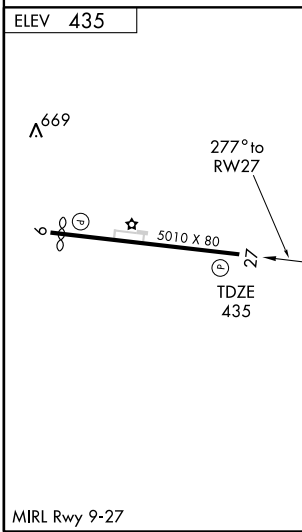
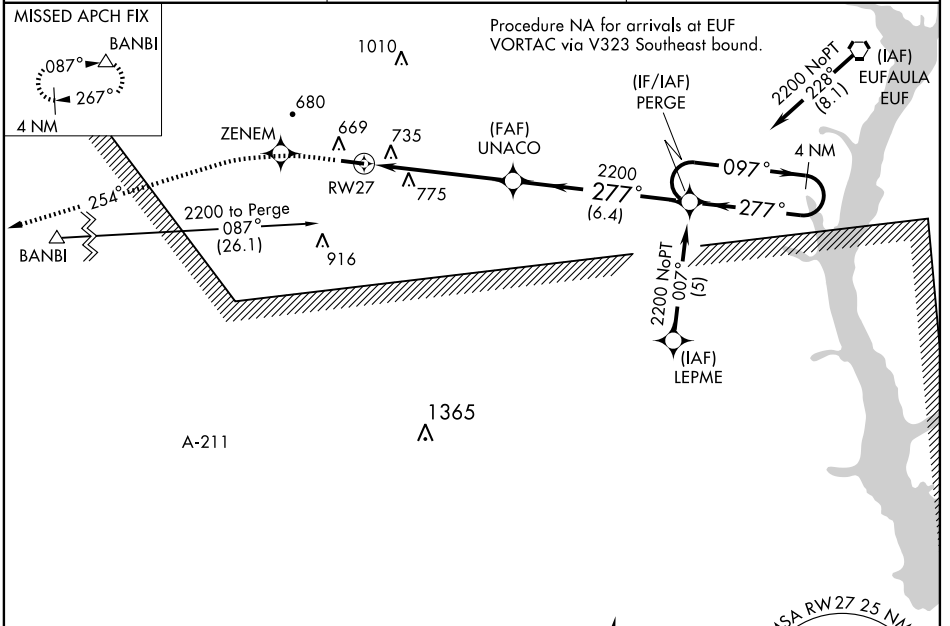
CLAYTON MUNI (11A)

APP CRS	Rwy Idg	5010
277°	TDZE	435
	Apt Elev	435

When local altimeter setting not received, use Dothan altimeter setting and increase all MDAs 100 feet, LNAV Cat. C and D visibility $\frac{1}{4}$, circling Cat. B visibility $\frac{1}{4}$ and Cat. C and D visibility $\frac{1}{2}$. Visibility reduction by helicopters NA. Circling NA south of Runway 9-27. VDP NA when using Dothan altimeter setting. DME/DME RNP-0.3 NA.

MISSED APPROACH: Climb to 2200 direct ZENEM and via 254° track to BANBI and hold.

AWOS-3 118.775	CAIRNS APP CON ★ 121.1 319.25	CTAF 122.9
--------------------------	---	----------------------



2200	ZENEM	TRK 254°	BANBI	UNACO	PERGE
4 NM Holding Pattern					
CATEGORY	A		B		D
LNAV MDA	1040-1 605 (700-1)		1040-1 $\frac{3}{4}$ 605 (700-1 $\frac{3}{4}$)		1040-2 605 (700-2)
CIRCLING	1100-1 665 (700-1)		1100-1 $\frac{3}{4}$ 665 (700-1 $\frac{3}{4}$)		1100-2 665 (700-2)

SE-4, 22 OCT 2009 to 19 NOV 2009

SE-4, 22 OCT 2009 to 19 NOV 2009