

DANVILLE, KENTUCKY

AL-6504 (FAA)

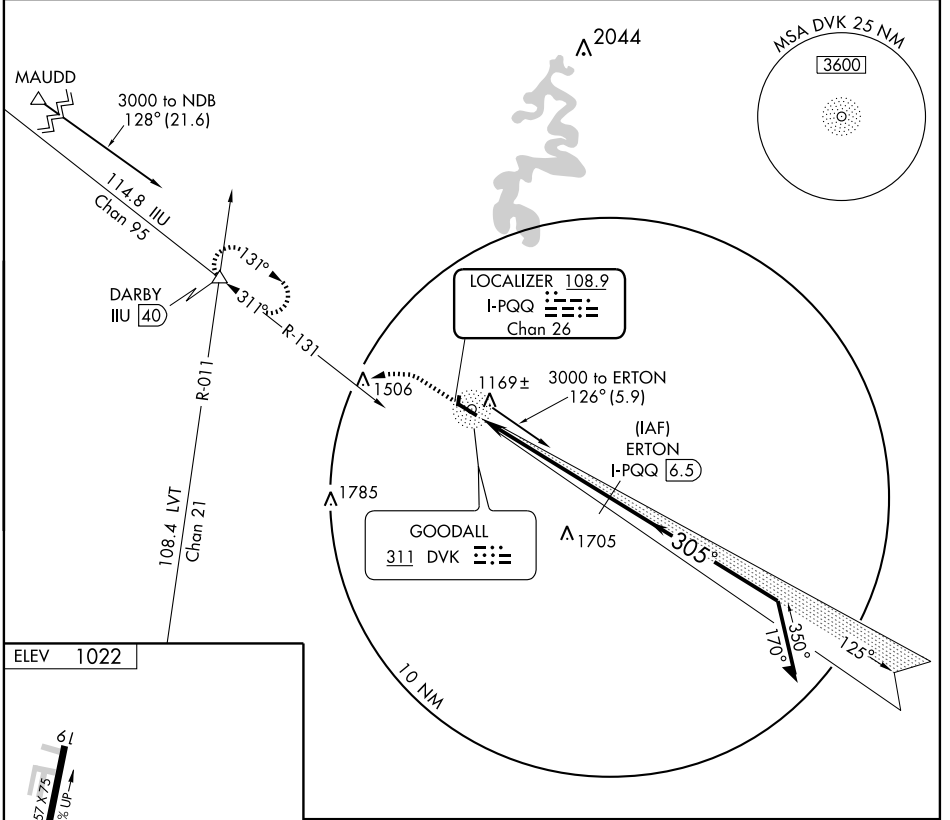
LOC/DME I-PQQ 108.9 Chan 26	APP CRS 305°	Rwy Idg TDZE Apt Elev 5000 1016 1022
---	------------------------	--

LOC/DME RWY 30

DANVILLE/ STUART POWELL FIELD (DVK)

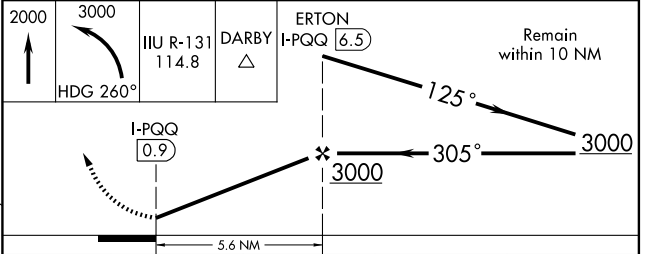
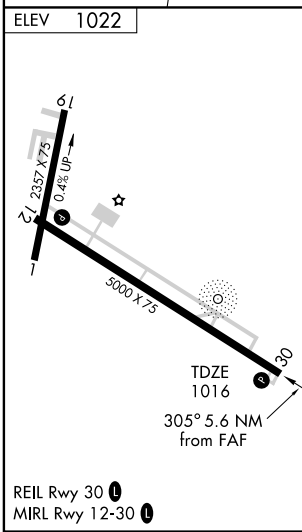
NA If local altimeter not received, use Lexington altimeter setting and increase all MDAs 80 feet.
MISSED APPROACH: Climb to 2000 then climbing left turn to 3000 via heading 260° and IJU R-131 to DARBY Int and hold.

AWOS-3 128.325	LEXINGTON APP CON 120.15 259.3	UNICOM 122.8 (CTAF) 0
--------------------------	--	---------------------------------



SE-1, 22 OCT 2009 to 19 NOV 2009

SE-1, 22 OCT 2009 to 19 NOV 2009



CATEGORY	A	B	C	D
S-30	1440-1	424 (500-1)	1440-1¼	424 (500-1¼)
CIRCLING	1480-1 458 (500-1)	1560-1 538 (600-1)	1560-1½ 538 (600-1½)	1720-2¼ 698 (700-2¼)

DANVILLE, KENTUCKY
Amdt 1B 08325

37°35'N-84°46'W

DANVILLE/ STUART POWELL FIELD (DVK)

LOC/DME RWY 30