

SMITHFIELD, NORTH CAROLINA

AL-6502 (FAA)

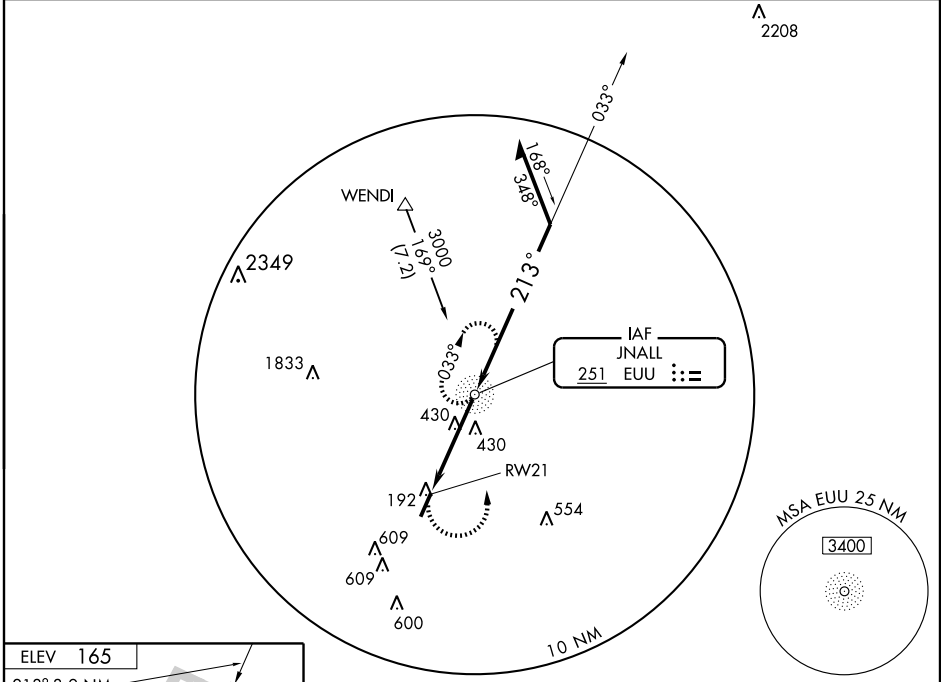
NDB or GPS RWY 21

SMITHFIELD/JOHNSTON COUNTY (JNX)

NDB EUU 251	APP CRS 213°	Rwy Idg 5500
		TDZE 165
		Apt Elev 165

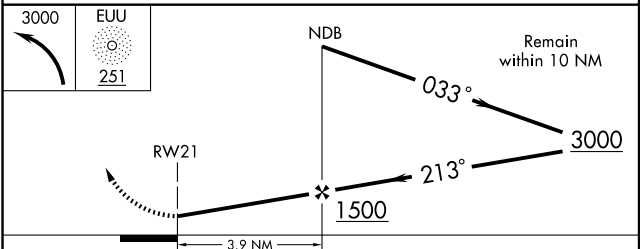
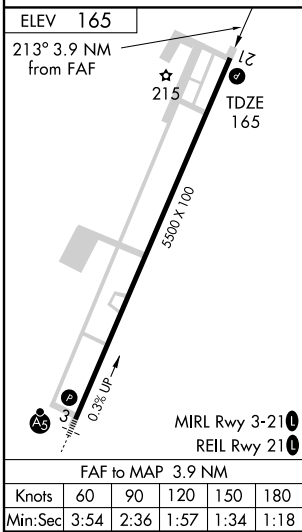
<p>▼ Obtain local altimeter setting on CTAF; when not received use Seymour Johnson AFB altimeter setting.</p> <p>▲NA</p>	<p>MISSED APPROACH: Climbing left turn to 3000 direct EUU NDB and hold.</p>
----------------------------------------------------------------------------------------------------------------------------------------	-----------------------------------------------------------------------------

AWOS-3 120.225	RALEIGH APP CON 125.3 380.05	GCO 135.075	UNICOM 122.8 (CTAF) ☉
--------------------------	----------------------------------------	-----------------------	---------------------------------



SE-2, 22 OCT 2009 to 19 NOV 2009

SE-2, 22 OCT 2009 to 19 NOV 2009



CATEGORY	A		B		C		D	
	S-21	780-1	615 (700-1)			780-1 ³ / ₄	615 (700-1 ³ / ₄)	615 (700-2)
CIRCLING	780-1	615 (700-1)			780-1 ³ / ₄	615 (700-1 ³ / ₄)	960-2 ¹ / ₂	795 (800-2 ¹ / ₂)
SEYMOUR JOHNSON AFB ALTIMETER SETTING MINIMUMS								
S-21	860-1	695 (700-1)			860-2	695 (700-2)	860-2 ¹ / ₄	695 (700-2 ¹ / ₄)
CIRCLING	860-1	695 (700-1)			860-2	695 (700-2)	1040-2 ³ / ₄	875 (900-2 ³ / ₄)

SMITHFIELD, NORTH CAROLINA
Amdt 6 08101

35°32'N - 78°23'W

SMITHFIELD/JOHNSTON COUNTY (JNX)
NDB or GPS RWY 21