

SMITHFIELD, NORTH CAROLINA

AL-6502 (FAA)

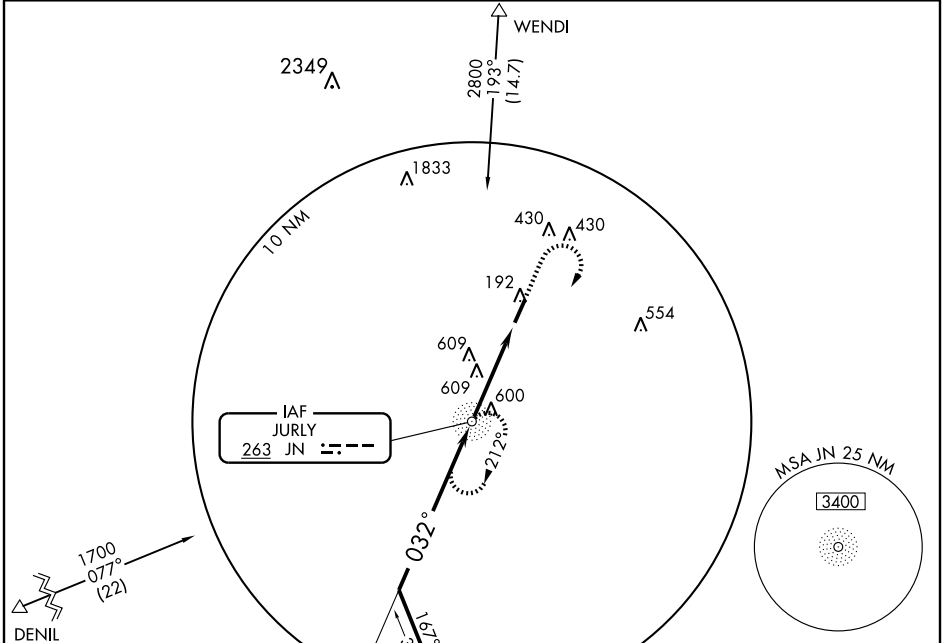
NDB RWY 3

SMITHFIELD/JOHNSTON COUNTY (JN X)

NDB JN 263	APP CRS 032°	Rwy Idg TDZE Apt Elev	5500 148 165
----------------------	------------------------	-----------------------------	---

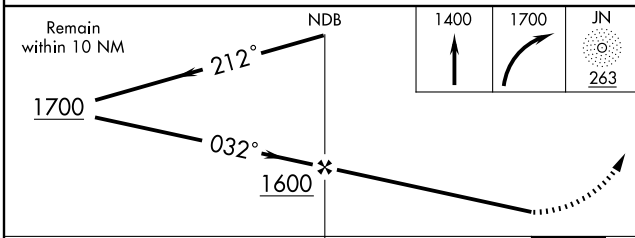
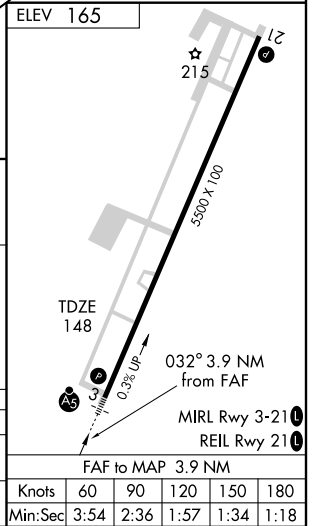
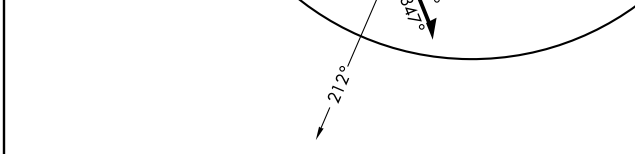
	For inoperative MALSR, increase S-3 Cat. B visibility to 1/4.		MISSED APPROACH: Climb to 1400 then climbing right turn to 1700 direct JN NDB and hold.

AWOS-3 120.225	RALEIGH APP CON 125.3 380.05	GCO 135.075	UNICOM 122.8 (CTAF) 0
--------------------------	--	-----------------------	---------------------------------



SE-2, 22 OCT 2009 to 19 NOV 2009

SE-2, 22 OCT 2009 to 19 NOV 2009



CATEGORY	A	B	C	D
S-3	960-3/4 812 (800-3/4)		960-2 812 (800-2)	960-2 1/2 812 (800-2 1/2)
CIRCLING	960-1 795 (800-1)	960-1 1/4 795 (800-1 1/4)	960-2 1/2 795 (800-2 1/2)	960-2 3/4 795 (800-2 3/4)

FAF to MAP 3.9 NM					
Knots	60	90	120	150	180
Min:Sec	3:54	2:36	1:57	1:34	1:18

SMITHFIELD, NORTH CAROLINA
Orig 08101

35°32'N - 78°23'W

SMITHFIELD/JOHNSTON COUNTY (JN X)
NDB RWY 3