

SMITHFIELD, NORTH CAROLINA

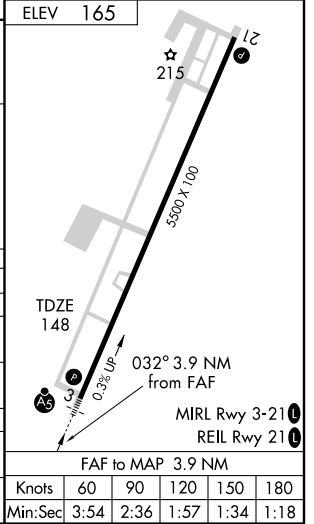
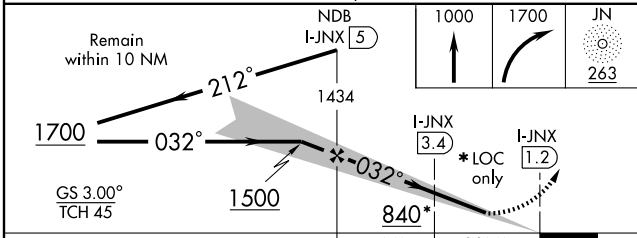
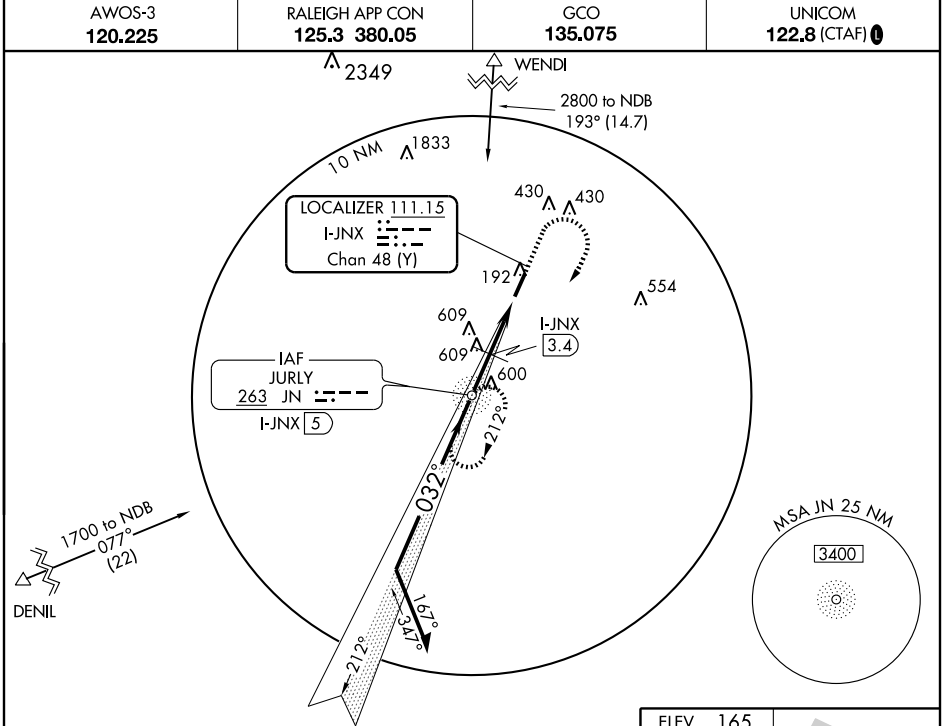
AL-6502 (FAA)

LOC/DME I-JNX 111.15 Chan 48 (Y)	APP CRS 032°	Rwy Idg TDZE Apt Elev	5500 148 165
--	------------------------	-----------------------------	---

ILS RWY 3

SMITHFIELD/JOHNSTON COUNTY (JNX)

ADF REQUIRED NA	MALSR AS	MISSED APPROACH: Climb to 1000 then climbing right turn to 1700 direct JN NDB and hold.	
		AWOS-3 120.225	RALEIGH APP CON 125.3 380.05



CATEGORY	A	B	C	D
S-ILS 3	348-1/2		200 (200-1/2)	
S-LOC 3	840-1/2	692 (700-1/2)	840-1 1/2 692 (700-1 1/2)	840-1 3/4 692 (700-1 3/4)
CIRCLING	840-1	675 (700-1)	840-2 675 (700-2)	960-2 1/2 795 (800-2 1/2)
DME MINIMUMS				
S-LOC 3	600-1/2	452 (500-1/2)	600-3/4 452 (500-3/4)	600-1 452 (500-1)
CIRCLING	640-1	475 (500-1)	660-1 1/2 495 (500-1 1/2)	960-2 1/2 795 (800-2 1/2)

ELEV 165	60	90	120	150	180
Min:Sec	3:54	2:36	1:57	1:34	1:18

SMITHFIELD, NORTH CAROLINA
Orig 08101

35°32'N - 78°23'W

ILS RWY 3

SE-2, 22 OCT 2009 to 19 NOV 2009

SE-2, 22 OCT 2009 to 19 NOV 2009